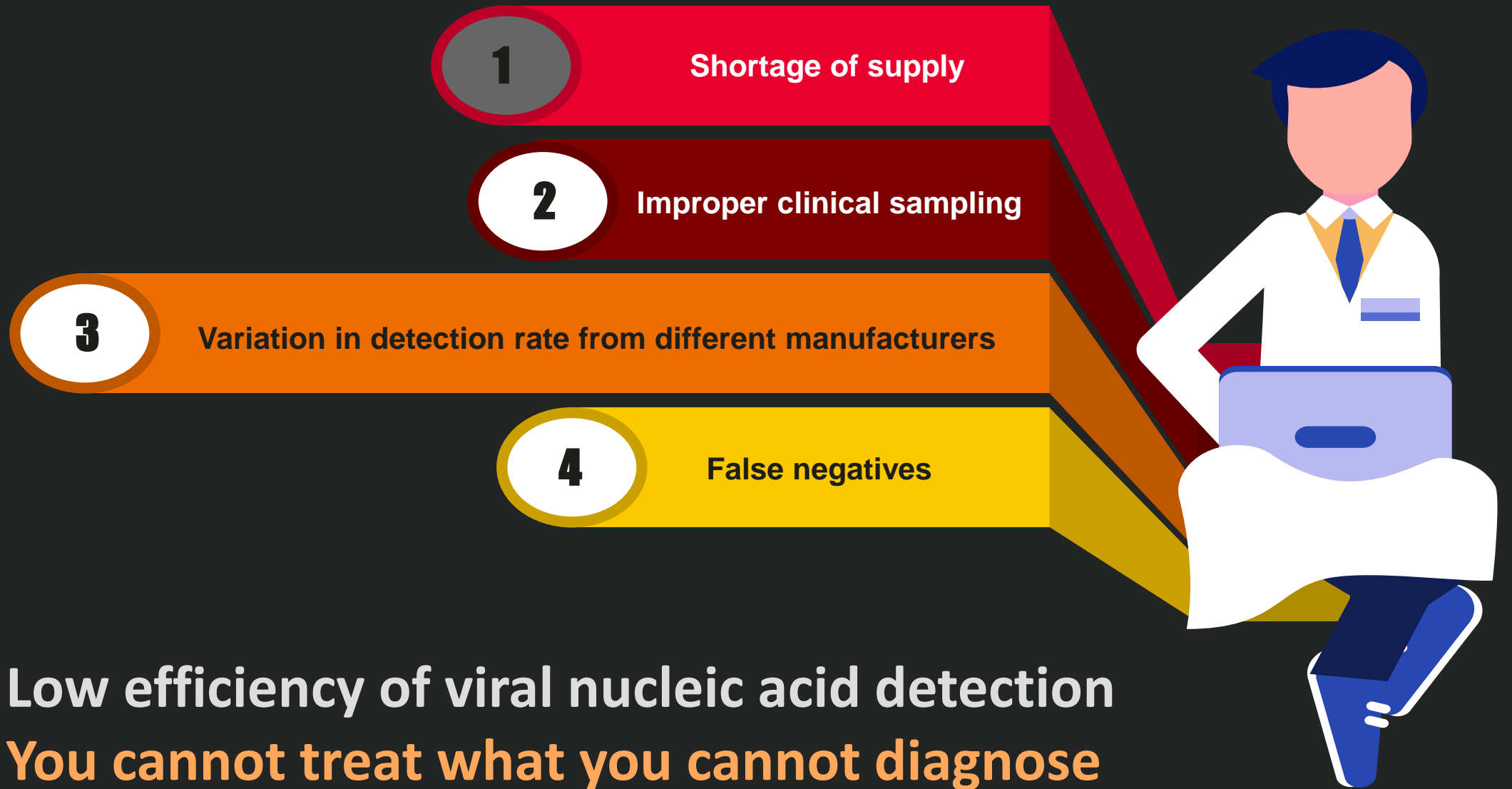


Artificial intelligence vs. **natural virus**

Rafał Jaczyński
Cyber Security Officer, CEE & Nordics



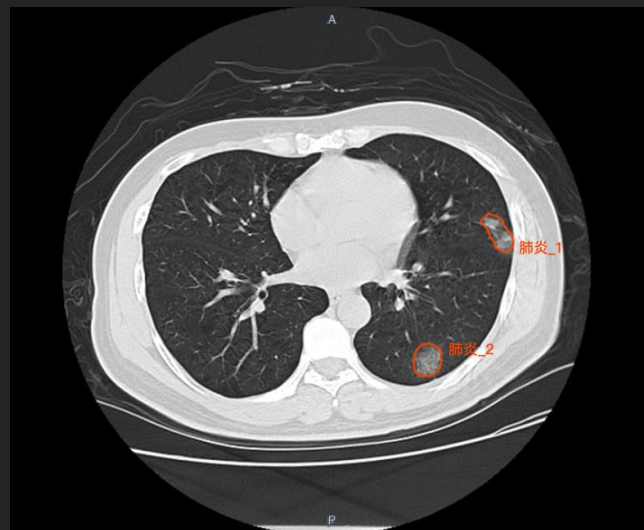


Chest CT may be considered a **primary tool** for COVID-19 detection



RT-PCR:

- High false negative rate
- Lack sensitivity during the first five days of the disease



CT Screening:

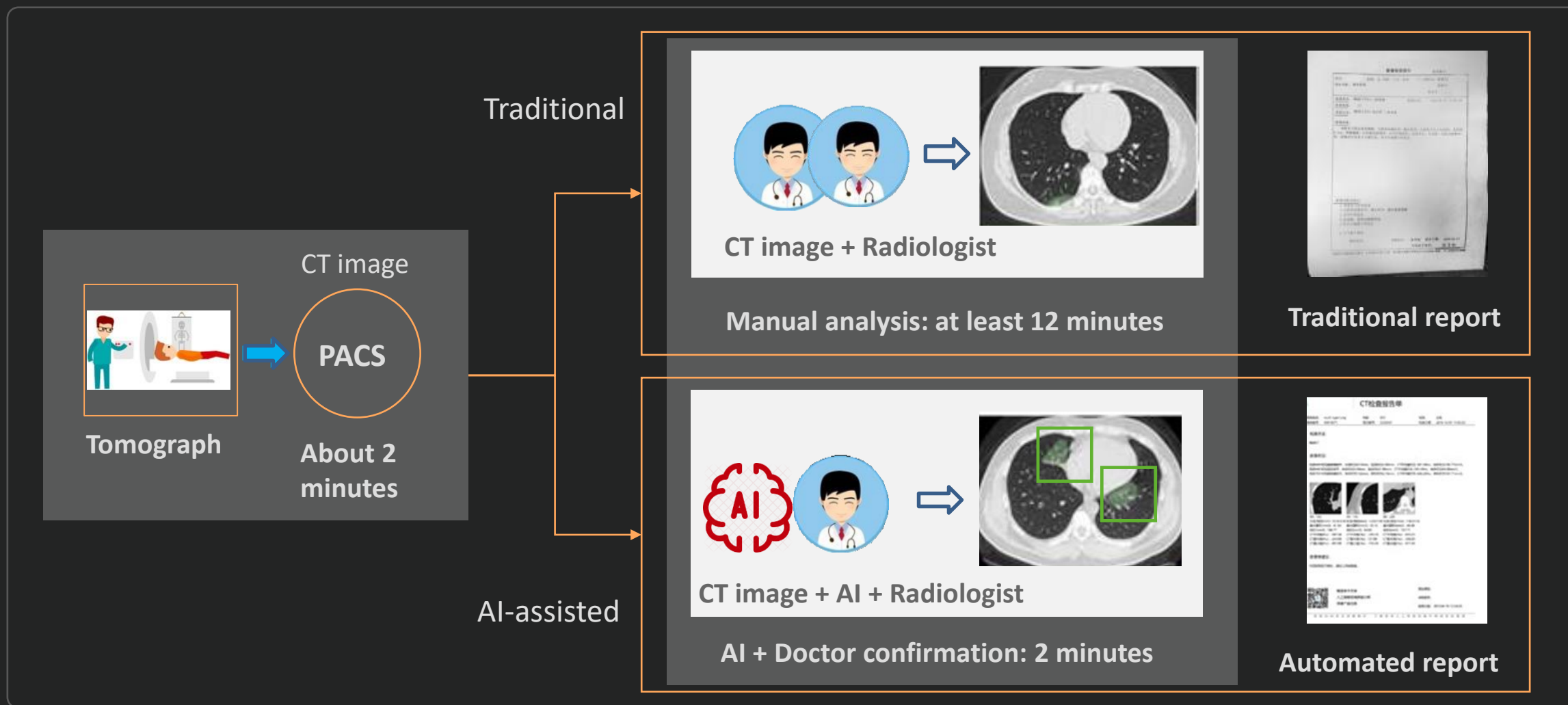
- Easy to perform
- Fast
- High sensitivity

The mean **lead time** in diagnosis of viral infection yielded by CT compared with laboratory results was **3** days.

“In a series of 51 patients with chest CT and RT-PCR assay performed within 3 days, the sensitivity of CT for COVID-19 infection was **98%** compared to RT-PCR sensitivity of **71%** ($p < .001$).”

- **Early Quarantine**
- **Early Detection**
- **Early Diagnosis**
- **Early Treatment**

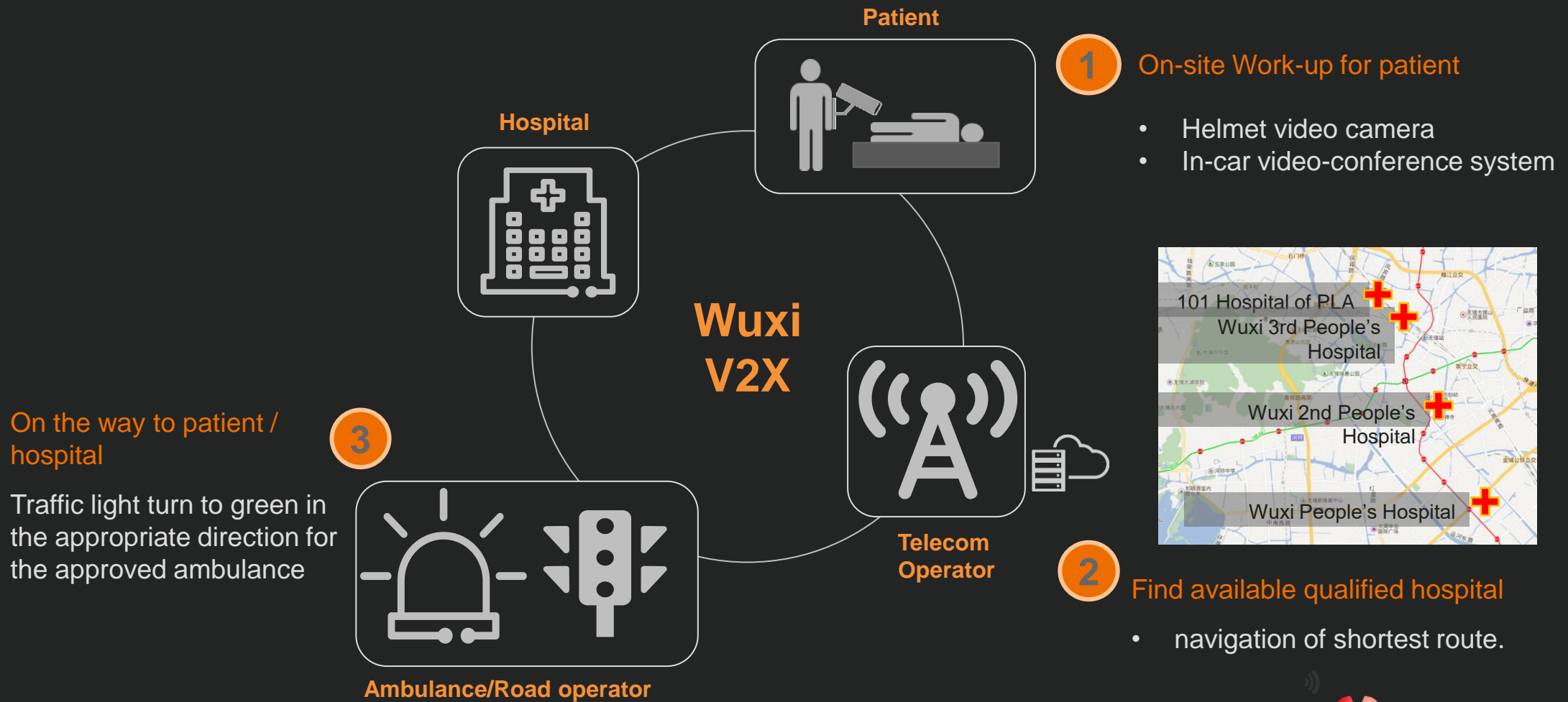
Can we make it even **faster and better**?



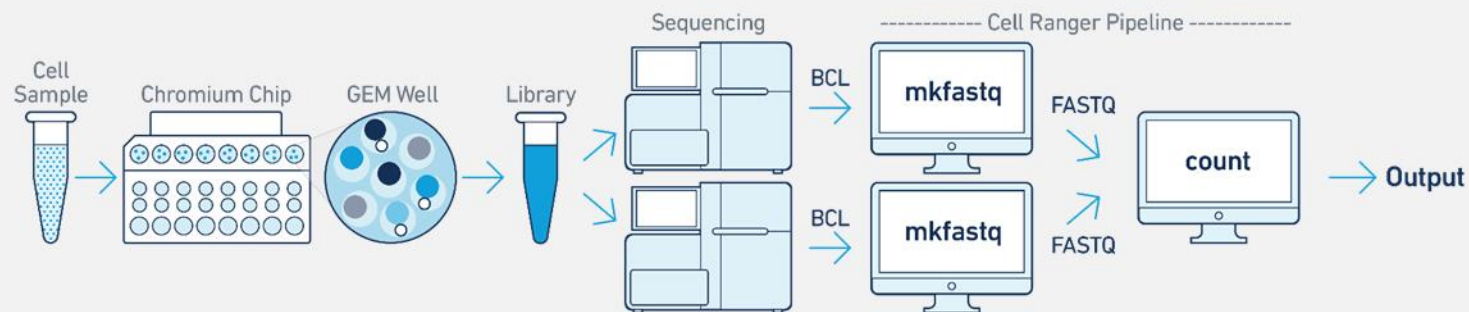
CT examination

Screening and diagnosis

Emergency transport during pandemics anyone?



Intelligent gene sequencing revealing **virus secret 10x faster**



EIHealth



HUAWEI CLOUD

23.5
hours



Original
analysis

2.5
hours



accelerated
analysis

Huawei accelerated Cell Ranger
vs. original version



HUAWEI CLOUD

10X GENOMICS



HUAWEI

THANK YOU

