



GISCO
CENTRAL EUROPE

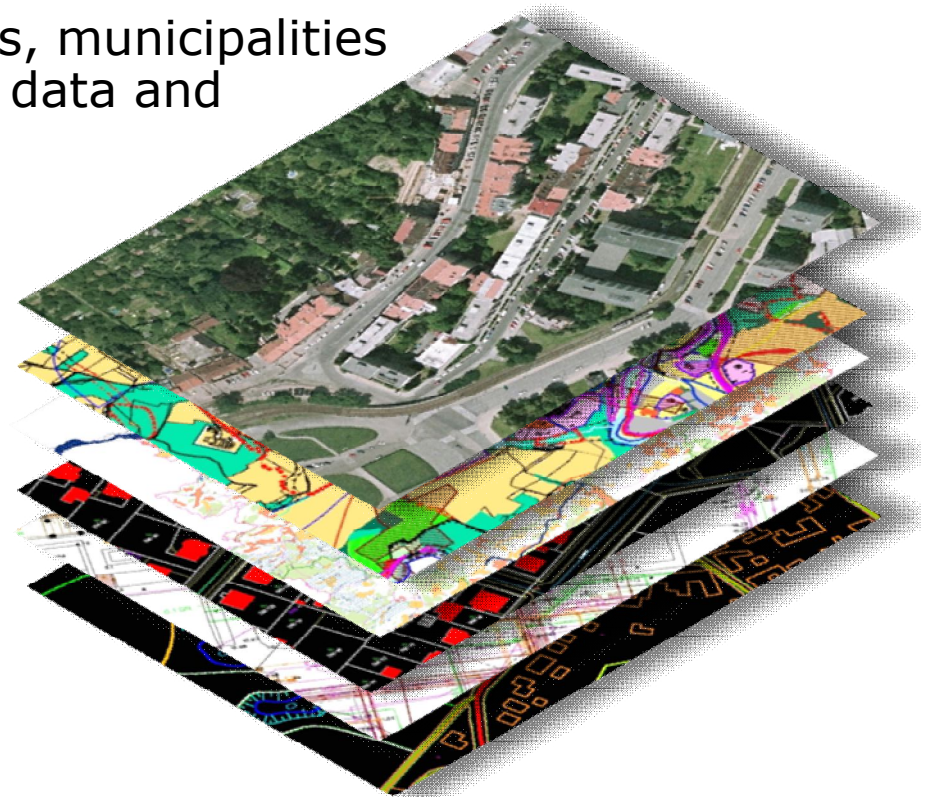
PROCESSES AT WORK WITH SPATIAL DATA IN PUBLIC ADMINISTRATION

ITAPA 2009

Bratislava, 3 - 4. 11. 2009

SPATIAL DATA SOURCES FOR PUBLIC ADMINISTRATION

- State (cadastral data, environment data)
- Technical infrastructure administrators (providers of territorially analytical data and digital technical map)
- Regional authorities, district towns, municipalities (creators of territorially analytical data and digital technical maps)
- Many other data sources

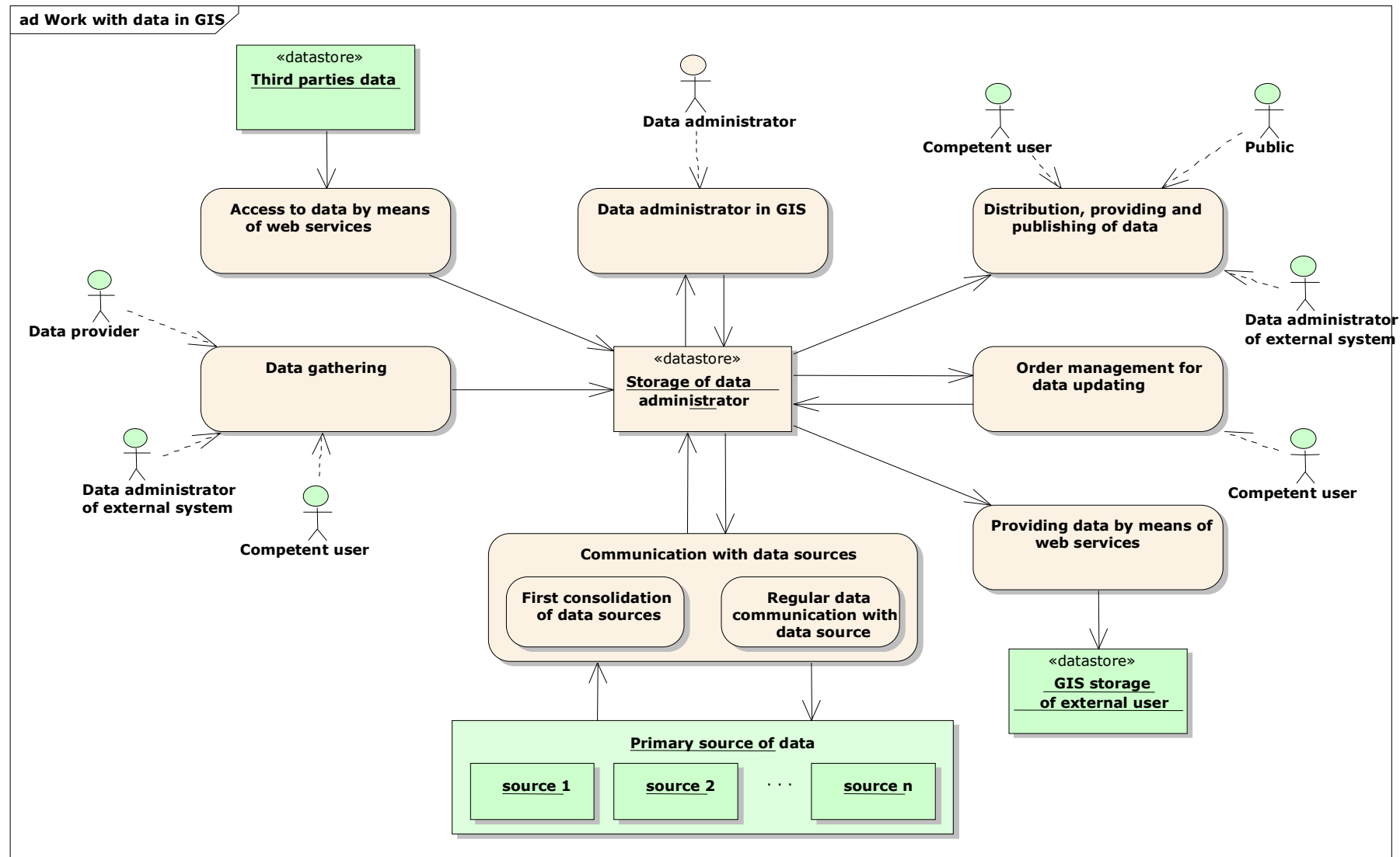


QUESTIONS

- How to obtain the data?
- How to use them?
- How to keep the data updated?
- How to maintain the communication with a primary data sources?
- How to make the data accessible to all competent users?
- How to provide the data to the other applications?
- How to integrate the data from a different sources?

THE WHOLE RANGE OF IMPORTANT PROCESSES ARE INDICATED AT WORK WITH SPATIAL DATA

PROCESSES AT WORK WITH SPATIAL DATA



THREE LAYERS OF SPATIAL DATA MANAGEMENT IN PUBLIC ADMINISTRATION



- Access to public administration data by means of web services
- Cadastral maps
- Ortofotomaps



- Administrative competencies for digital map of public administration
- Digital technical map
- Territorially analytical data
- Specialized cadastral map



- All data usage of digital map of public administration
- Data take over for IS
- Remote access to data



UNIFORM MODEL FOR PROCESSES AT ADMINISTRATING SPATIAL DATA

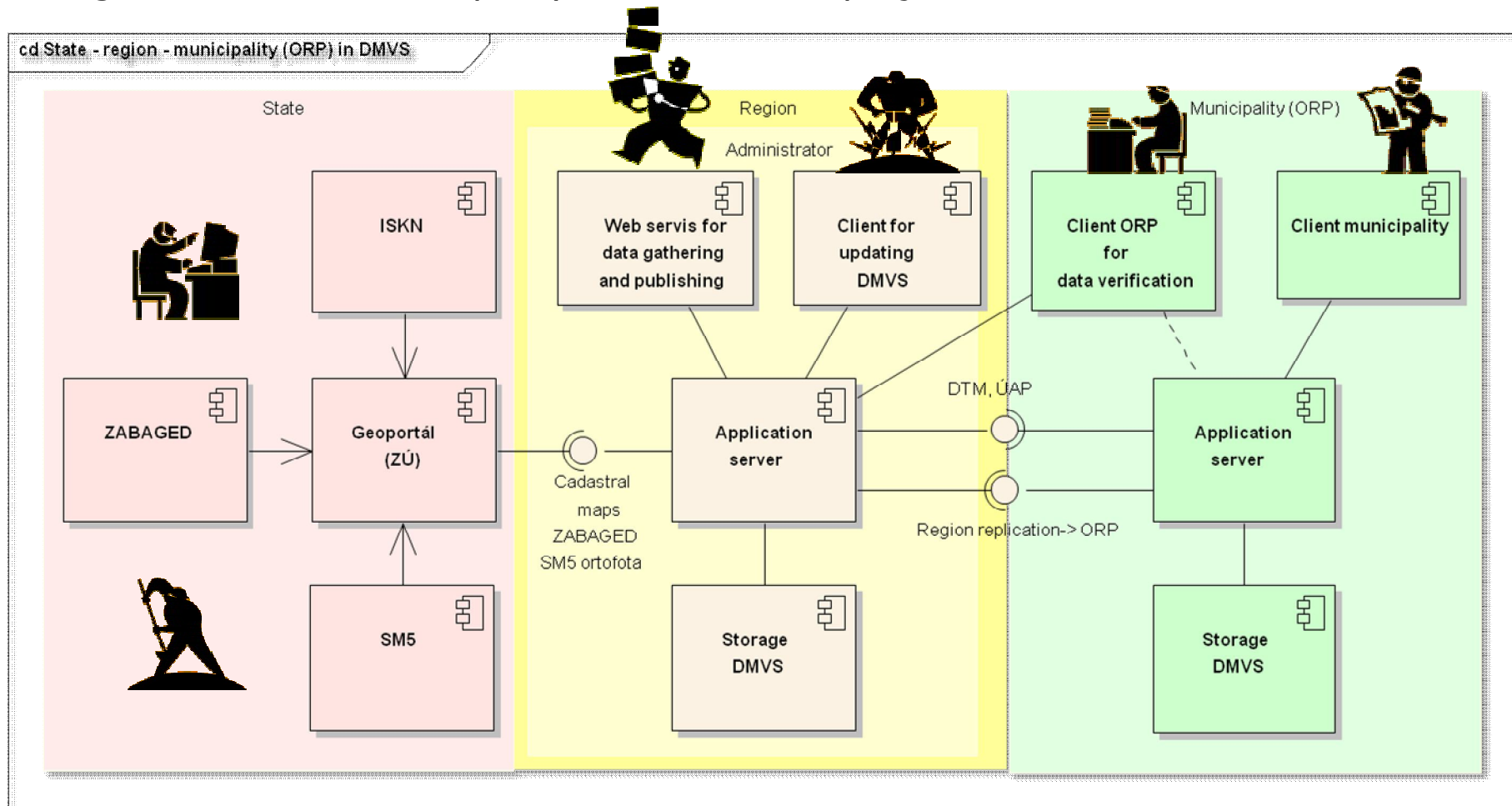
Is it possible to design a uniform model for processes at administrating spatial data common to all levels of public administration?



The outcomes of formally performed process analysis show that it can.

ADMINISTRATIVE MODEL FOR DIGITAL MAP OF PUBLIC ADMINISTRATION(DMVS)

The usage example of three layer GIS architecture for consolidated data administration and the access to public administration data at state level, region level and municipality level in DMVS project.



ANSWERS TO SOME QUESTIONS

- How to keep the data updated?
 - Regular data updating
 - Consider outsourcing of data updating

- How to maintain the communication with a primary data sources?
 - Make an agreement on data boundary-line
 - Create the link for automatic data take over
 - Take the advantage of INSPIRE norm

- How to make the data accessible to all competent users?
 - Enable the access to data by means of standard formats, web services and the usage of INSPIRE norm
 - Secure the access to data by user authority

- How to provide the data to the other applications?
 - Publish standard web services or database views
 - Enable data exporting in standard formats

THANK YOU FOR YOUR ATTENTION

Ing. Radek Levíček

Director of BERIT Division

Asseco Central Europe

Contact Information:

Asseco Czech Republic, a.s.

Žarošická 13, 628 00 Brno

Czech Republic

Phone: +420 545 554 100

Fax: +420 545 554 999

radek.levicek@asseco.cz

www.asseco.cz

www.berit.cz

This presentation is the property of Asseco Czech Republic and Asseco Slovakia, companies co-operating within the Asseco Central Europe (ACE) business group. Information presented serves for marketing purposes only and constitutes neither an offer to sell nor a solicitation to buy. ACE members accept no liability whatsoever for any loss arising directly or indirectly from the use of, reliance of any information contained in this presentation or for any omission of the information. The processing, copying, recording on information carriers, as well as making this presentation or any part thereof available in any way to third parties requires the prior consent of ACE member.