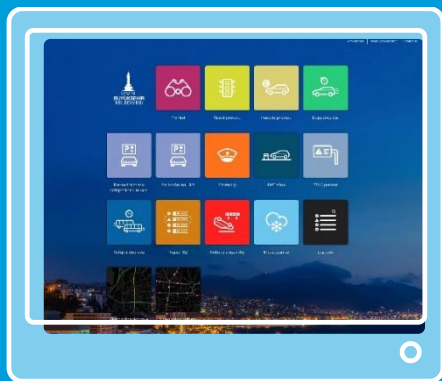
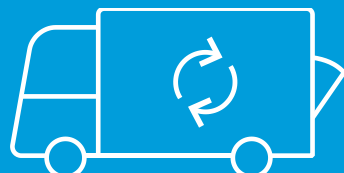


FLEXIBILNÁ A OTVORENÁ PLATFORMA

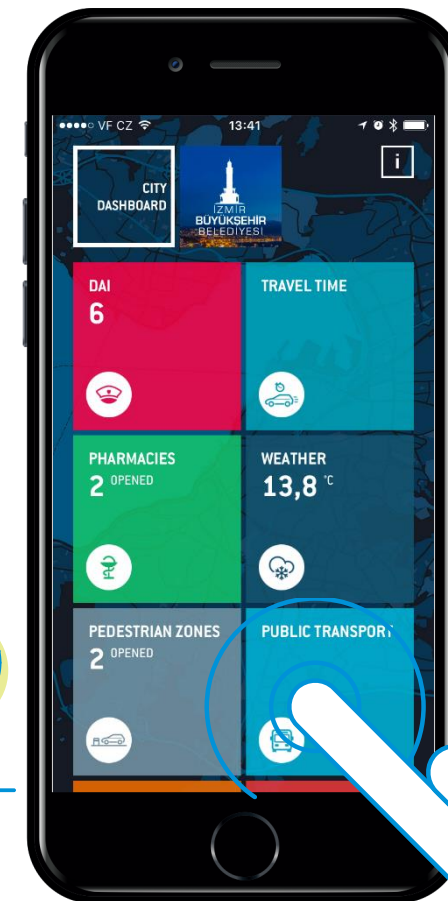
1. MESTSKÝ ÚRAD



2. SERVISNÉ ORGANIZÁCIE



3. OBČANIA



**PRÍPADOVÁ ŠTÚDIA
PROJEKTU INTELIGENTNÉ MESTO
AKO INVIPO
POMOHLO MESTU A DOPRAVE**

IZMIR, TURECKO

Izmir je metropola so 4 miliónmi obyvateľov.

Je globálne uznávané ako progresívne inteligentné mesto.

KRITICKÁ DOPRAVNÁ SITUÁCIA

Ťažké dopravné zápchy, žiadne adaptívne kontroly, žiadna priorita pre verejnú dopravu a mimoriadne okolnosti, žiadne zbieranie dopravných dát

PROBLÉMY S PARKOVANÍM

Parkoviská a parkovacie priestory bez monitorovania, žiadna parkovacia stratégia, žiadne parkovacie dáta

BEZPEČNOSTNÉ PROBLÉMY

Absencia dohľadových systémov, žiadne monitorovanie piestupkov, nekontrolovaný vjazd vozidiel do pešej zóny



MISIA 1

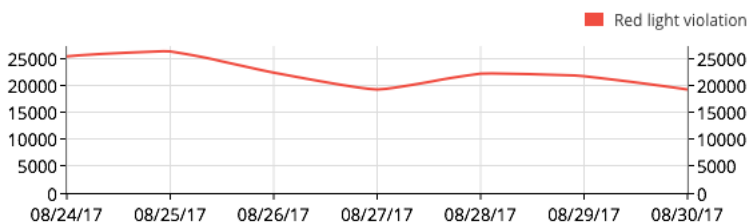
ZVÝŠIT BEZPEČNOSTĚ PREMÁVKY

PRIESTUPKY

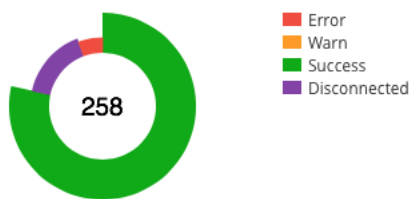




History - Red light violation



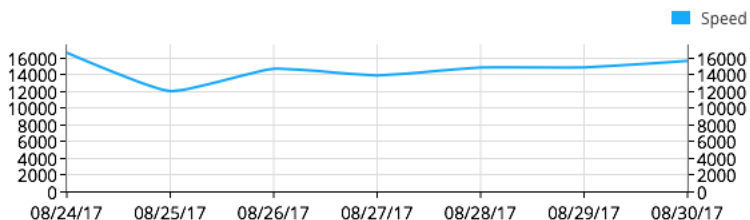
Status



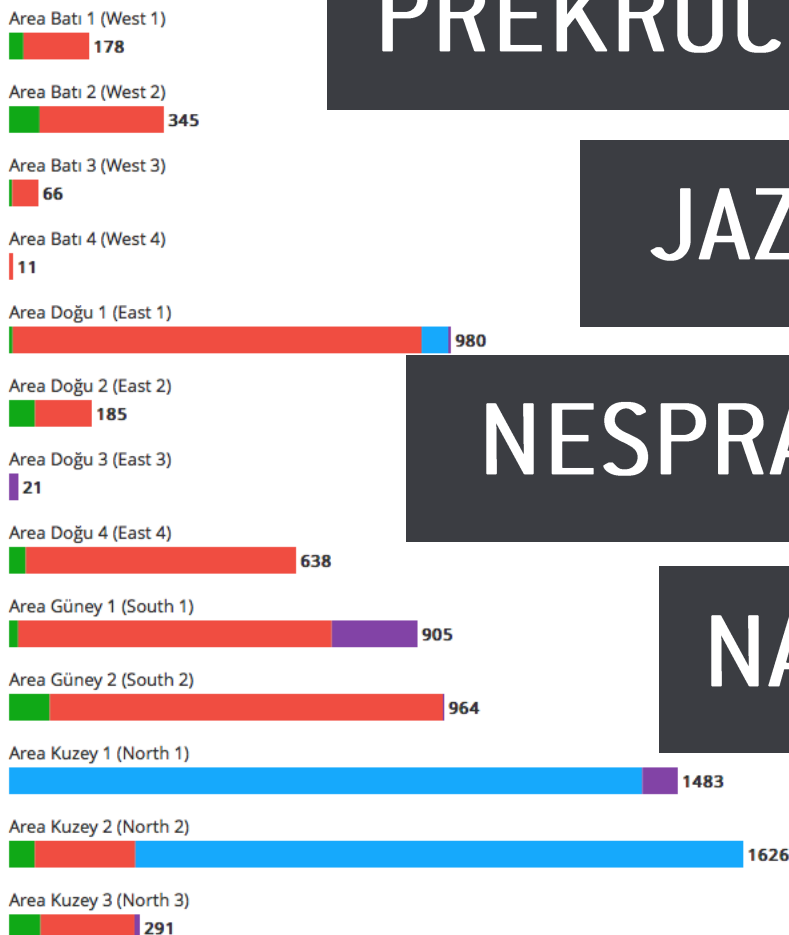
Today violations



History - Speed



Violations by area



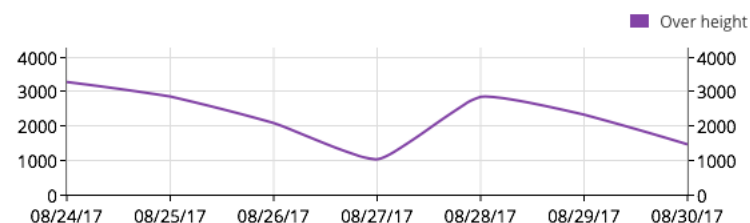
PREKROČENIE RÝCHLOSTI

JAZDA NA ČERVENÚ

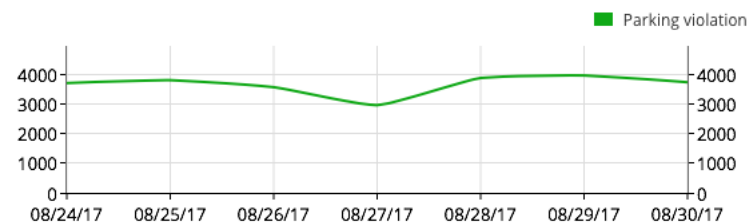
NESPRÁVNE PARKOVANIE

NADMERNÁ VÝŠKA

History - Over height

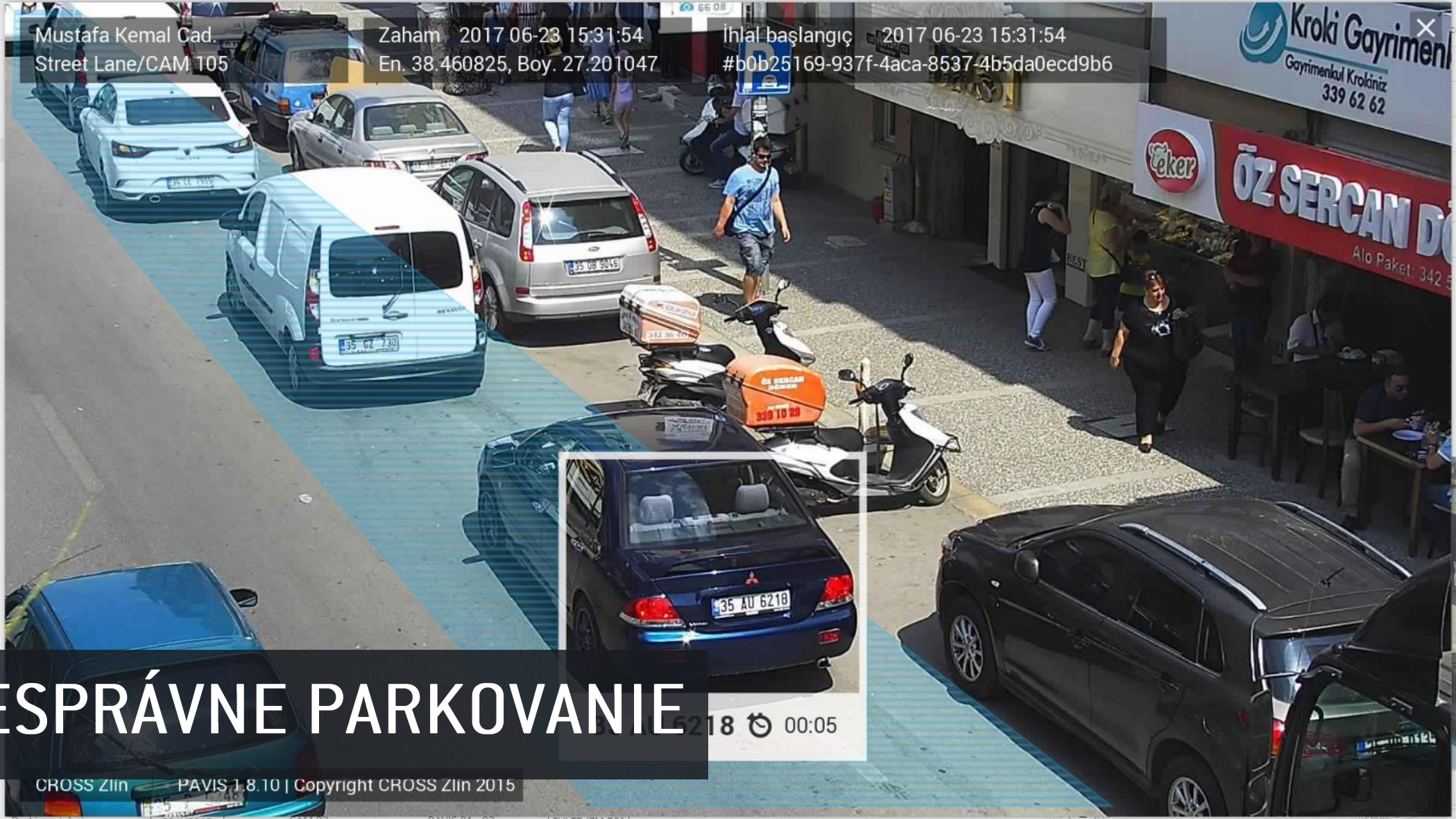


History - Parking violation



Violation browser

- Time ▼
- 06/23/17 3:38 PM
 - 06/23/17 3:38 PM
 - 06/23/17 3:37 PM
 - 06/23/17 3:37 PM
 - 06/23/17 3:37 PM
 - 06/23/17 3:37 PM
 - 06/23/17 3:37 PM
 - 06/23/17 3:37 PM
 - 06/23/17 3:36 PM
 - 06/23/17 3:36 PM
 - 06/23/17 3:36 PM
 - 06/23/17 3:36 PM
 - 06/23/17 3:35 PM
 - 06/23/17 3:35 PM
 - 06/23/17 3:34 PM
 - 06/23/17 3:34 PM
 - 06/23/17 3:34 PM
 - 06/23/17 3:34 PM
 - 06/23/17 3:34 PM
 - 06/23/17 3:34 PM
 - 06/23/17 3:33 PM
 - 06/23/17 3:33 PM
 - 06/23/17 3:33 PM
 - 06/23/17 3:32 PM
 - 06/23/17 3:32 PM
 - 06/23/17 3:32 PM
 - 06/23/17 3:32 PM
 - 06/23/17 3:32 PM
 - 06/23/17 3:31 PM
 - 06/23/17 3:31 PM



Mustafa Kemal Cad. Street Lane/CAM 105
 Zaham 2017 06-23 15:31:54 En. 38.460825, Boy. 27.201047
 ihlal başlangıç 2017 06-23 15:31:54 #b0b25169-937f-4aca-8537-4b5da0ecd9b6



NESPRÁVNE PARKOVANIE 35218 00:05

CROSS Zlin PAVIS 1.8.10 | Copyright CROSS Zlin 2015

Parking violation	35AV8815	CAM 82	PAVIS 81 - 82	PVI-TR-IZM-P81
Parking violation	35JR910	CAM 74	PAVIS 73 - 74	PVI-TR-IZM-P73
Parking violation	35V5535	CAM 57	PAVIS 57	PVI-TR-IZM-P57
Parking violation	35Z5675	CAM 99	PAVIS 99 - 100	PVI-TR-IZM-P99

Parking violation

- Centrálny systém pre monitorovanie priestupkov
- Zníženie počtu priestupkov
- Špecifický index merajúci dopravnú bezpečnosť, trendy a predpoveď dopravnej situácie

MISIA 2

ZLEPŠIT DOPRAVNÚ SITUÁCIU
A SLUŽBY

TRAFFIC LIGHT CONTROLLER RS 4S



CROSS

POWER BUS 1

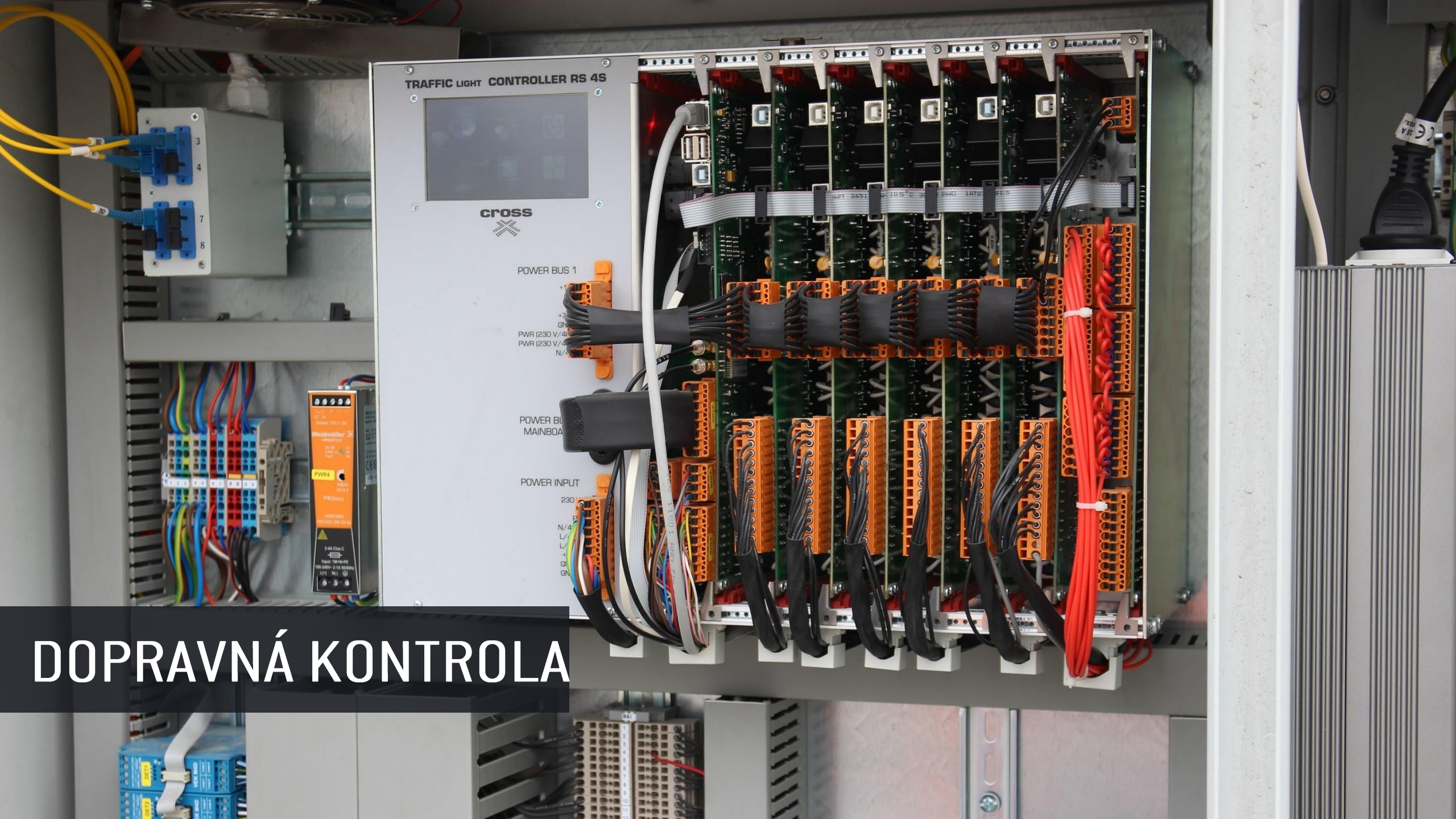
+
-7
GND
PWR (230 V/4
PWR (230 V/4
N/A

POWER BUS
MAINBOARD

POWER INPUT

230
N/A
0 0 1 CL C

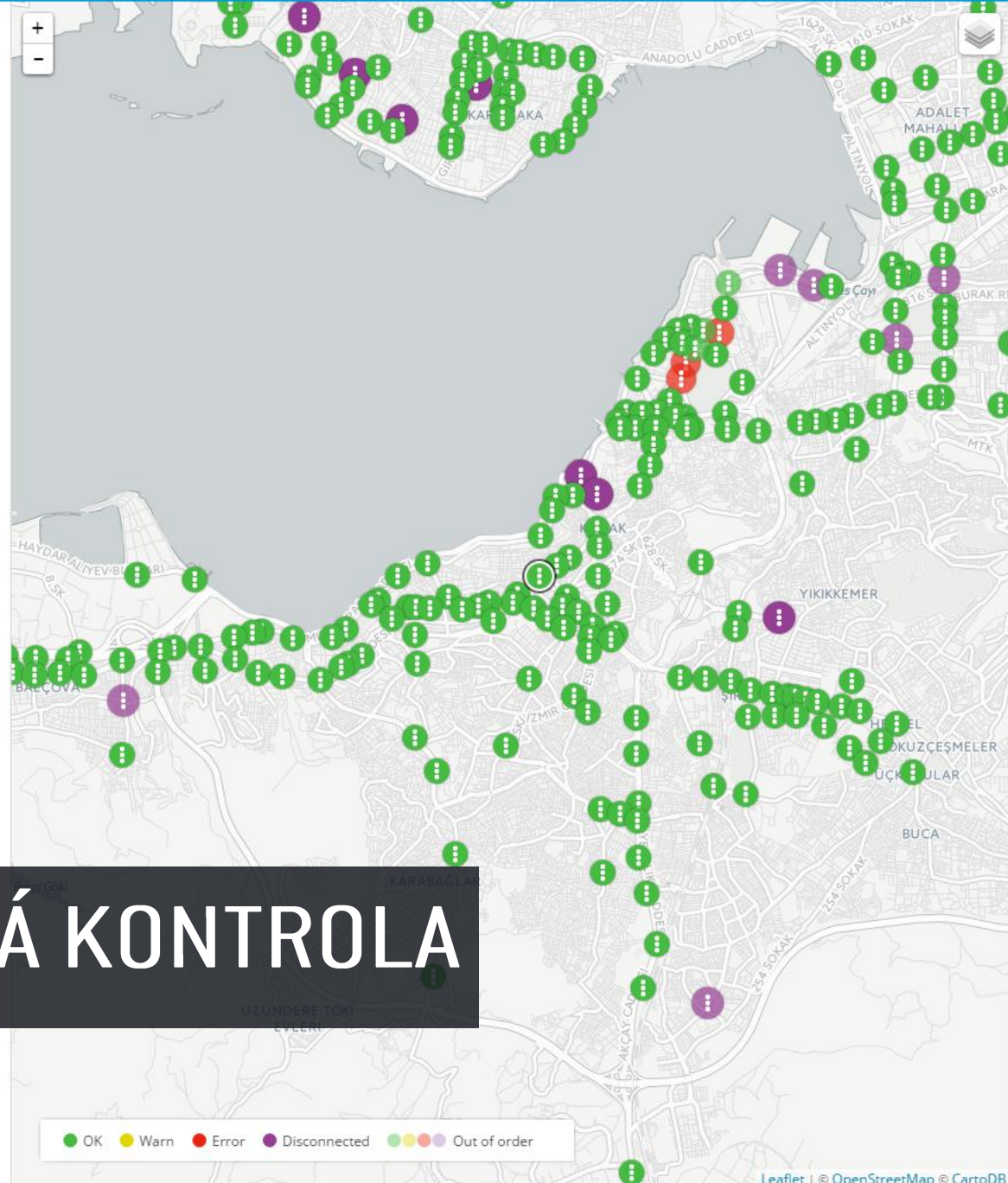
DOPRAVNÁ KONTROLA



Status Controllers

Search

- Out of order
- Disconnected (20)
- Error with shutdown (2)
- Error with partial shutdown (1)
- Error without shutdown (0)
- Internal error without shutdown (0)
- Success (367)



● OK
 ● Warn
 ● Error
 ● Disconnected
 ● Out of order

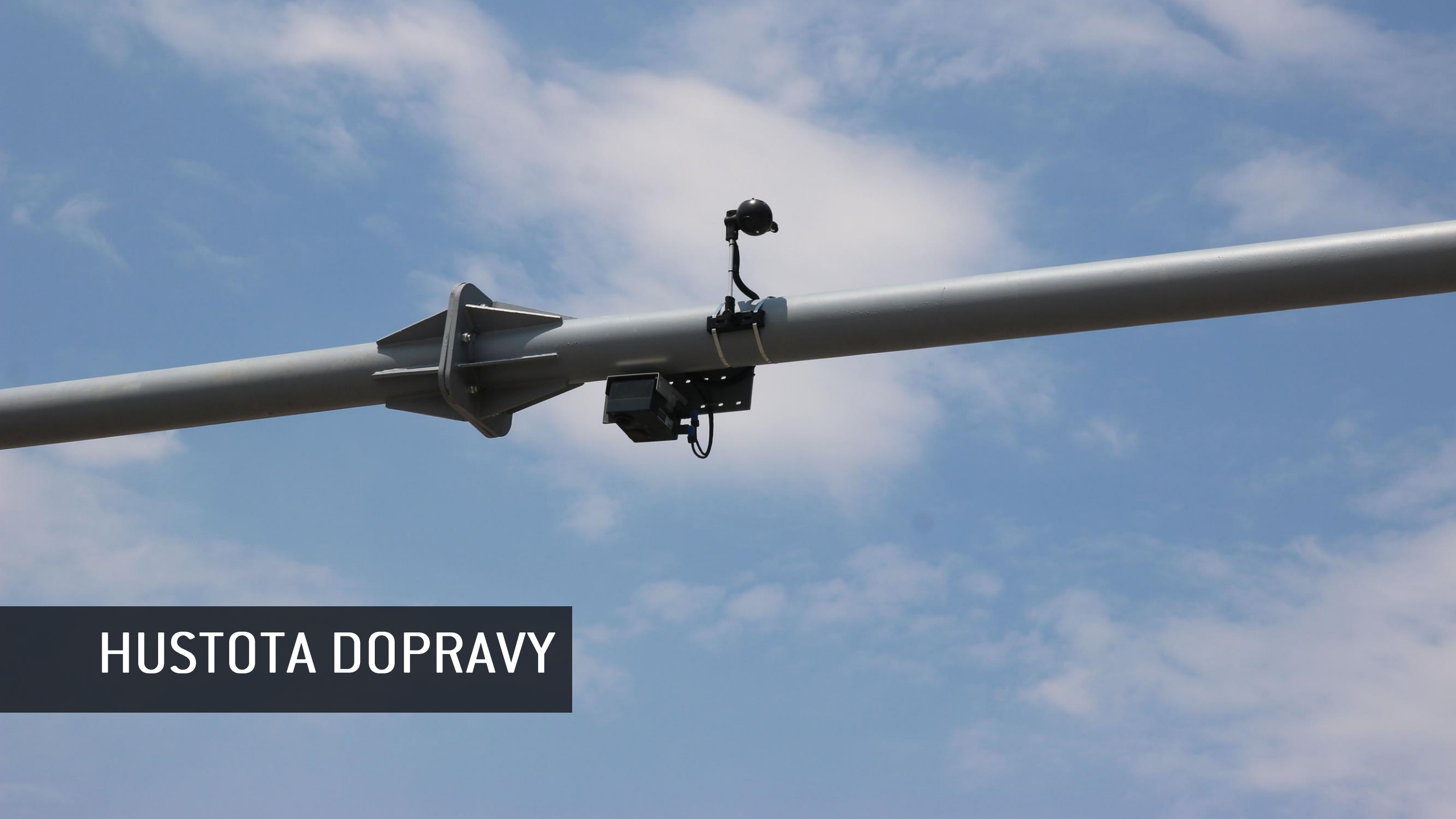
Y80 UCYOL METRO

Status System Logbook

General	
Time source	GPS
SWCM	OK
Controller door	OK
Wartung	OK
Power 230 V	Active
Public transport receiver	OK
GSM service modem	Error
GPS time	Active
NTP time	Error
UPS	OK
Ocit version	2.0, 1.2
Software version	2.1.3
Detectors	
No failure	
Outputs	
No failure	
UPS	
Utility power voltage	220 V
Battery voltage	13.4 V
Output voltage	220 V
Output power frequency	50 Hz
Output load	25 %
Temperature	43 °C
Shutdown mode	No



DOPRAVNÁ KONTROLA

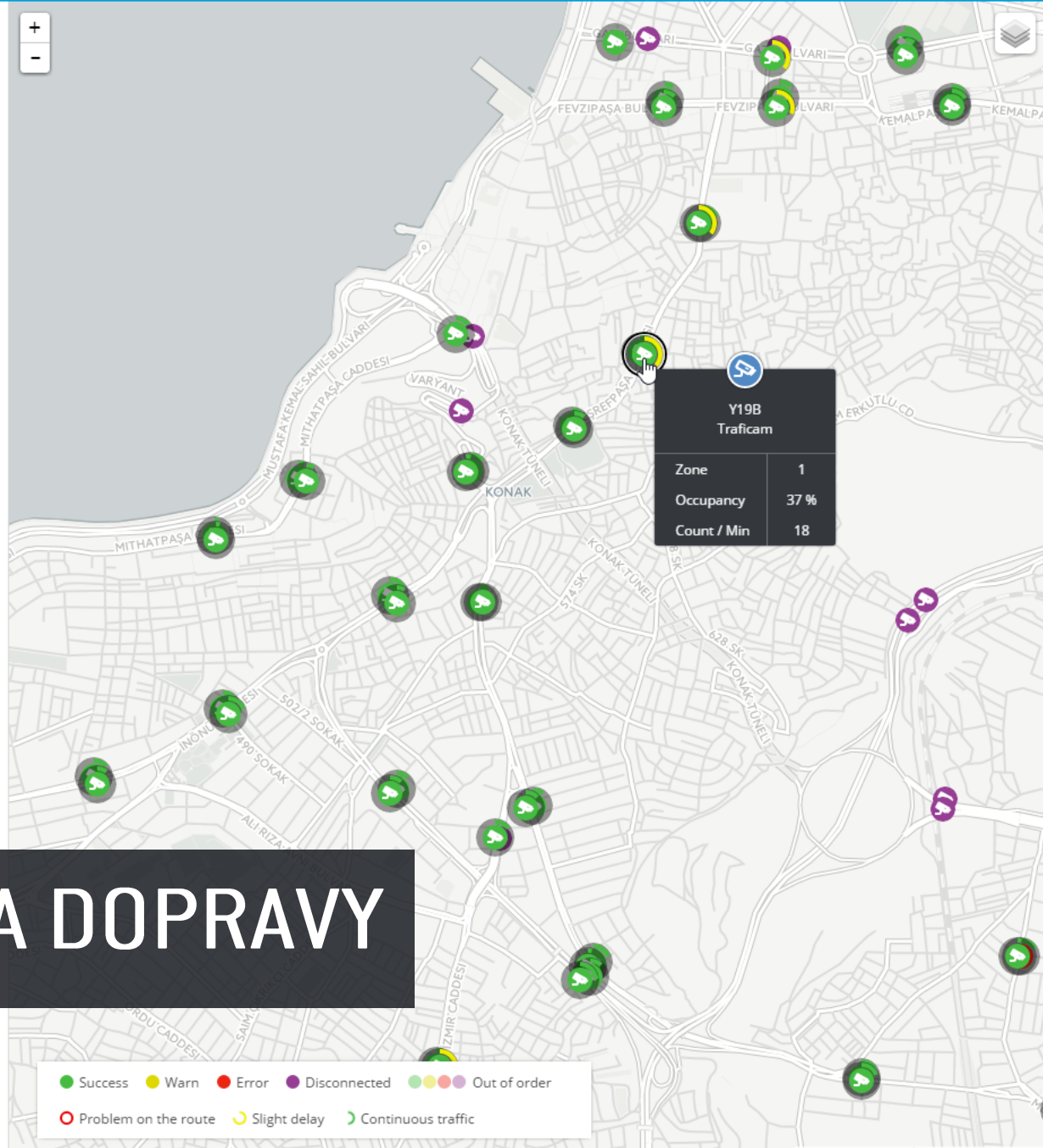


HUSTOTA DOPRAVY

Status Areas

Search

- Out of order
- ▶ ✖ **Disconnected** (82)
- ▶ ▲ **Error** (4)
- ▶ ! **Warn** (0)
- ▶ ✔ **Success** (312)



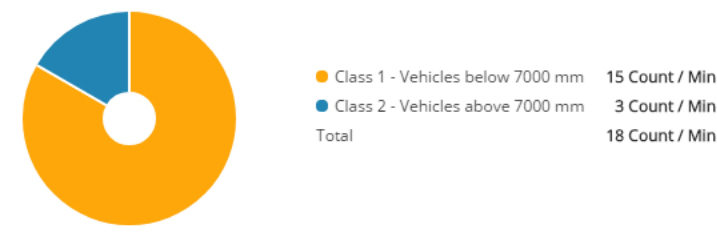
- Success
- Warn
- Error
- Disconnected
- ● ● Out of order
- Problem on the route
- Slight delay
- Continuous traffic

Detail ✕

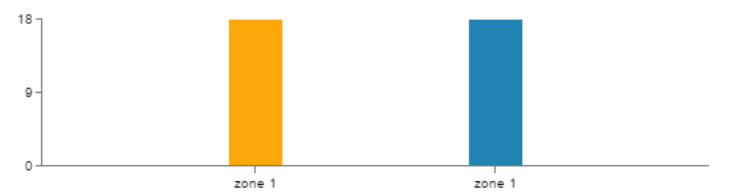
Name	Y19B TMD-TR-IZM-Y19B					
			Class 1		Class 2	
	Occupancy	Total Count / Min	Count / Min	⌀ Speed	Count / Min	⌀ Speed
Zone 1	37 %	18	15	18 km/h	3	18 km/h

[View image](#)

Classes



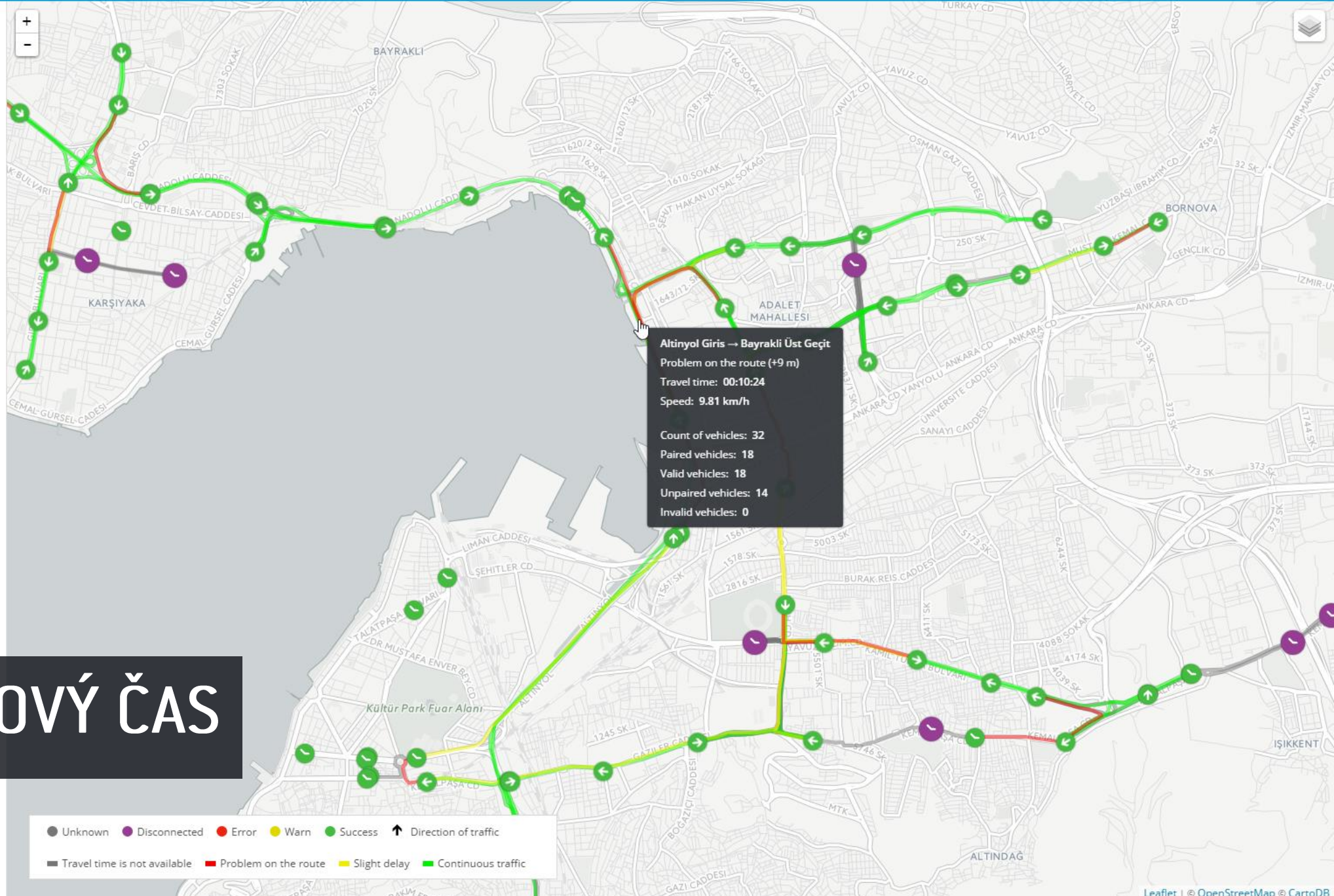
Average speed (km/h)



HUSTOTA DOPRAVY

Search

- ✖ Disconnected (16)
- ⚠ Error (0)
- ⚠ Warn (1)
- ✔ Success (143)



DOJAZDOVÝ ČAS

● Unknown ● Disconnected ● Error ● Warn ● Success ↑ Direction of traffic
 ■ Travel time is not available ■ Problem on the route ■ Slight delay ■ Continuous traffic

VÝSLEDKY



Pred

Po

14 minút



35 minút

MISIA 3

ZVÝŠIŤ PODVEDOMIE O
DOPRAVE A PARKOVANÍ



PREMENLIVÉ DOPRAVNÉ ZNAČKY



WEATHER

26.3°C	28.3°C
North	East
24.7°C	27.4°C
West	South

Welcome to Izmir City Dashboard!

Izmir is a smart city powered by more than 600 smart devices. Using unique City Dashboard you can now easily see and control how your city works. Explore traffic situation, check free places where to park or just watch how the city is going right now.

DAI

4

DRIVER ARROGANCE INDEX

PHARMACIES

12

DOĞA ECZANESİ ▾

CLOSURES

1

Konak Tramvay hattı çalışması nedeniyle yol kapalıdır
05/31/17 11:00 PM

ACCIDENTS

2

Maddi Hasarlı Kaza
06/02/17 09:47 AM

SMART CITY IZMIR HAS

5032

SMART DEVICES

Traffic controllers	390
Traffic cameras	398
Travel time detectors	160
Parking lots	56
Violation systems	247
Pedestrian zones	84
Message signs	76
Weather stations	14
Other devices	3607

PARKING SPACES

36 SEHIT FETHIB... ▾ 37 1351. SK. ▾ 04 ZIYA GÖKALP... ▾

36 Free

TRAVEL TIME

0 minutes

AVERAGE DELAY

PEDESTRIAN ZONES

3

MİMAR KEMALETTİN KEMERALTI	Closed
1. KORDON	Open
KIBRIS ŞEHİTLERİ	Open
Karsiyaka	Closed

PUBLIC TRANSPORT

Otogar - 30036

Basmane

Only direct connections

CITY DASHBOARD

BUSES

BUCA TUĞSAVU... ▾

Buca Stadyum 6 min

CAMERAS

DEPARTURE ARRIVAL

06/21/2017 16:00



CLOSURE

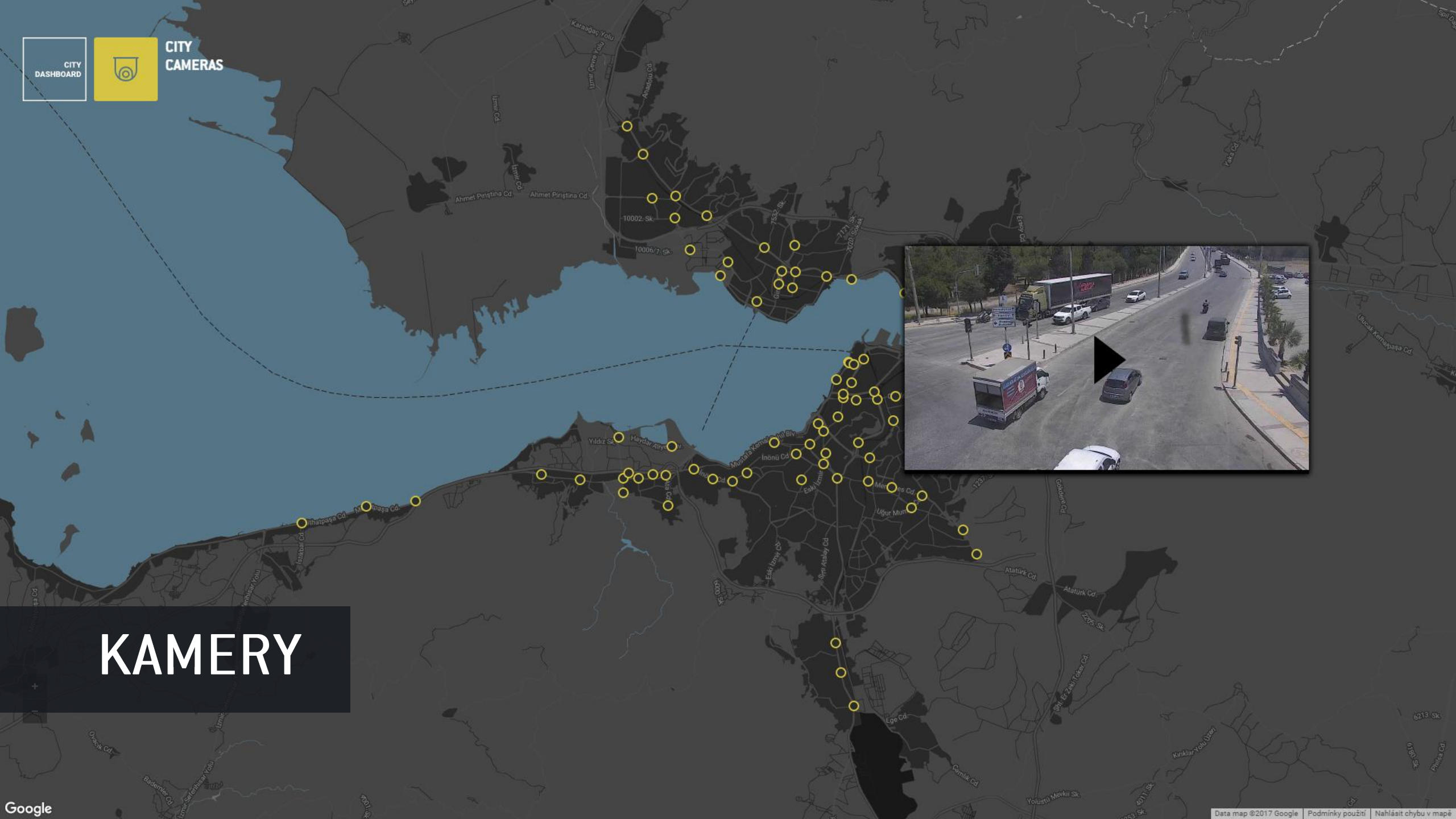
START 05/31/17 11:00 PM
END 07/23/17 11:00 PM

●●● Ali Çetinkaya Blv.-Alternatif

KONAK TRAMVAY HATTI ÇALIŞMASI NEDENİYLE YOL KAPALIDIR

START 05/31/17 11:00 PM
END 07/23/17 11:00 PM

NEHODY A UZÁVIERKY



KAMERY

ALSANCAK KATLI OTOPIK
548 / 550

16 KORDON 2 (MERKEZ) YO...

8
available out of 22

PAID ON-STREET PARKING

16 Kordon 2 (Merkez) Yol Kenarı Otopark

[Navigate](#)

PARKOVACIE MIESTA



PEŠIE ZÓNY

KIBRIS ŞEHİTLERİ

OPEN

Opening hours

Monday	-
Tuesday	-
Wednesday	-
Thursday	-
Friday	-
Saturday	-
Sunday	-

Entrances

- Kibris Sehıtleri Caddesi, place H-3
[Navigate](#)
- Kibris Sehıtleri Caddesi, place H26
[Navigate](#)
- Kibris Sehıtleri Caddesi, place H-29
[Navigate](#)
- Kibris Sehıtleri Caddesi, place H-32
[Navigate](#)
- Kibris Sehıtleri Caddesi, place H-33
[Navigate](#)
- Kibris Sehıtleri Caddesi, place H-35
[Navigate](#)
- Kibris Sehıtleri Caddesi, place H-36
[Navigate](#)
- Kibris Sehıtleri Caddesi, place H-5
[Navigate](#)
- Kibris Sehıtleri Caddesi, place H-9
[Navigate](#)

● Opened
 ● Closed
 ● Unknown
 ● Exit



TRAVEL TIME



TRAVEL TIME

ACTUAL TRAFFIC

FROM **BUCA TUGSAVU...** ▾

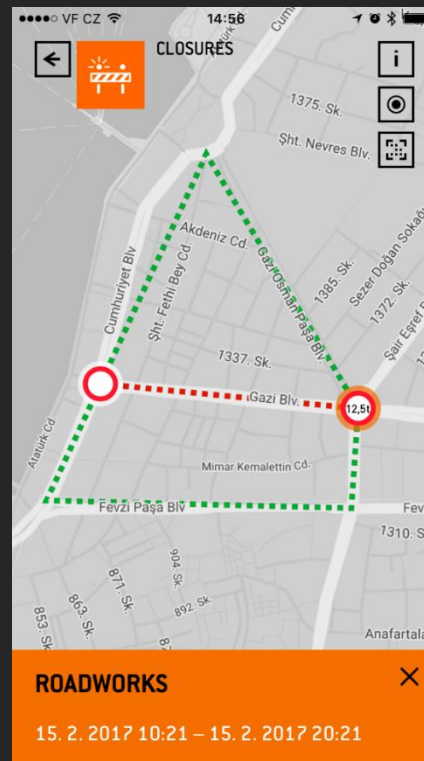
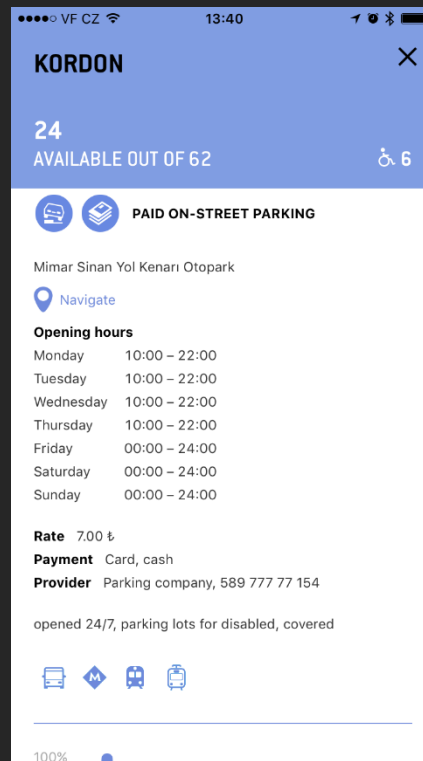
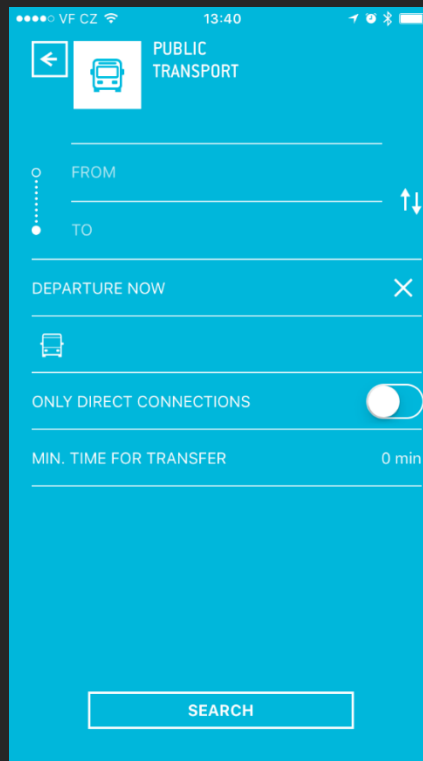
Buca Stadyum	6 min
Dokuzgösmeler	10 min
Esrefpasa Cad.	1 min
Kasaplar	8 min
Sirinyer	1 min

Now	Mo	Tu	We	Th	Fr	Sa	Su
08:21							
	06:00	10:00	14:00	18:00	22:00		

[XML](#) [JSON](#)

DOJAZDOVÝ ČAS

MOBILNÁ APLIKÁCIA



- Web mestského dispečingu a mobilná aplikácia pre občanov
- Kontrolné a dohľadové centrum
- Systém informačných tabúľ pre vodičov

MISIA 4

**ZNÍŽIT KRIMINALITU
A ZVÝŠIT OCHRANU OBČANOV**

DOHLADOVÉ SYSTÉMY

BY AKTAR
GAYRİMENKUL
404 94 94

DENTİSTİ
AĞIZ
SAĞLIĞI

Dişhekim
Can Altuğ KAYA
Dişhekim
Diler KAYA

KIDİ
7-14

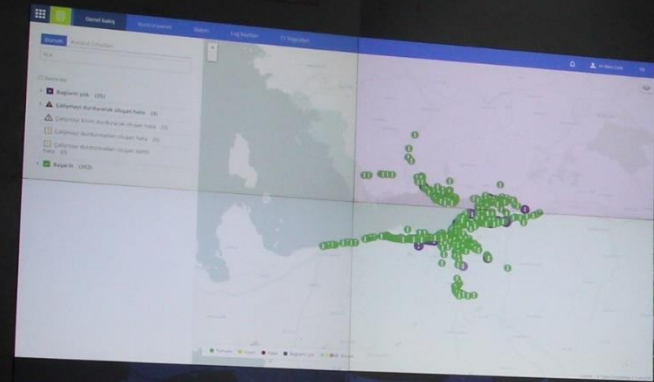
HAN GÜNDÜZ
DİL KURSU

POLİKLİNİK
KAYA



İZMİR ULAŞIM MERKEZİ

İZUM



24 traffic camera feeds showing various road intersections and landmarks in Izmir. The feeds are arranged in a 4x6 grid. The top row includes: M24 eds53.2, M14.1 eds60.3, 54 KONAK PIER, 100 ATAKENT KAVŞAĞI, and 21 DENİZMEN KAVŞAĞI. The second row includes: 18 FAHRETTİN ALTAY MEYDANI, 49 VARYANT, Bağlantı yok, Bağlantı yok, Bağlantı yok, and Bağlantı yok. The third row includes: 13 EGE PARK KAVŞAĞI, 8 İNCİRALTI KAVŞAĞI, 9 BALÇOVA TERMAL, 17 MİTHATPAŞA ENDÜSTRİ MESLEK, 96 KARŞIYAKA ATATÜRK ANITI, and 14 BALÇOVA KAVŞAĞI. The fourth row includes: 4 MALTEPE ASKERİ LİSESİ, 2 GÜZELBAHÇE GİRİŞİ, 101 TAYPARK, 7 NARLIDERE FOLKART, 6 NARLIDERE OTOBAN, and 60 ALSANCAK GAR. The fifth row includes: 48 BAYRAMYERİ, 49 VARYANT, 68 TEPECİK KAVŞAĞI, 69 ESREFPASA HAST. KAVŞAĞI, and 74 OTOGAR KAVŞAĞI.

Dashboard with various data panels including traffic counts, maps, and weather information. The top left panel shows '5141' and 'İZUM'. The top right panel shows '1' and 'İZUM'. The bottom left panel shows '1159' and 'İZUM'. The bottom right panel shows '31°', '32.3°', and '30°'.

MONİTOROVACIE CENTRUM



- 1.000+ kamier umiestnených v dôležitých oblastiach
- Centrálny monitorovací systém
- Scenáre núdzovej prevádzky



MISIA 5

ZVÝŠENIE EFEKTIVITY MHD

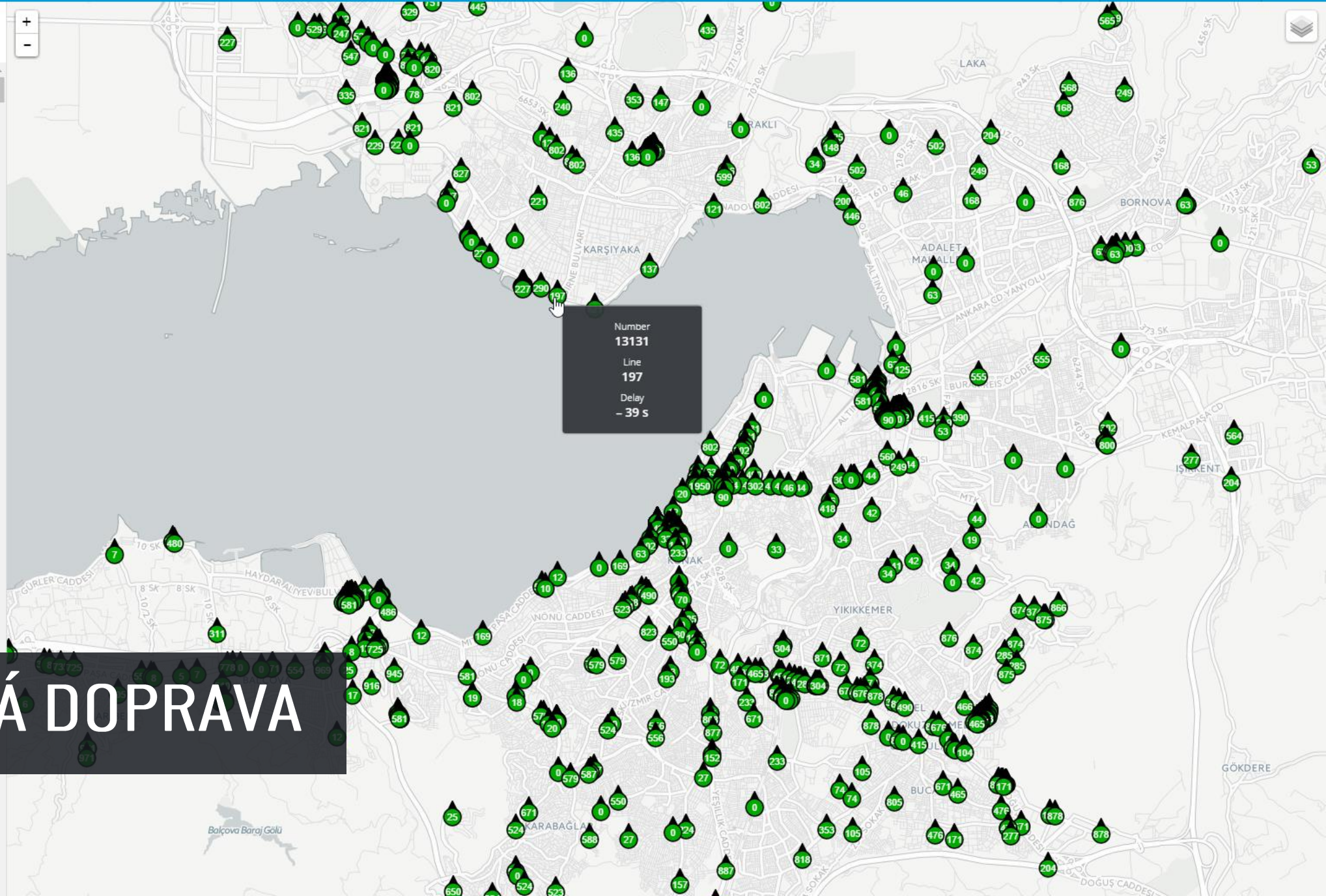


VEREJNÁ DOPRAVA



#	Line	Delay
---	------	-------

#	Line	Delay
12049	0	0 s
13326	0	0 s
8093	599	0 s
13125	0	0 s
4049	524	0 s
8251	0	0 s
14020	0	0 s
1009	0	0 s
13239	105	0 s
7020	0	0 s
9246	0	0 s
13108	971	0 s
13113	550	0 s
8083	0	0 s
14042	390	0 s
8177	0	0 s
1084	0	0 s
9160	945	0 s
98029	19	0 s
13181	428	0 s
9250	0	0 s
13289	0	0 s
8001	0	0 s
9209	821	0 s
9256	0	0 s
13053	0	0 s
98036	599	0 s
13150	0	0 s
13255	0	0 s
7019	0	0 s



VEREJNÁ DOPRAVA



Otogar - 30036
Basmane

21.6. (Wednesday) 18:01 - 18:30 29 min.,

Bus 30318
 18:01 Otogar (4760)
 18:15 Halkapınar Metro (3039)

Time to change 12 min.

Metro 689
 18:27 Halkapınar (53)
 18:30 Basmane (12)

21.6. (Wednesday) 18:02 - 18:40 38 min.,

Bus 26660
 18:02 Otogar (4761)
 18:16 Bornova Metro (1055)

Time to change 12 min.

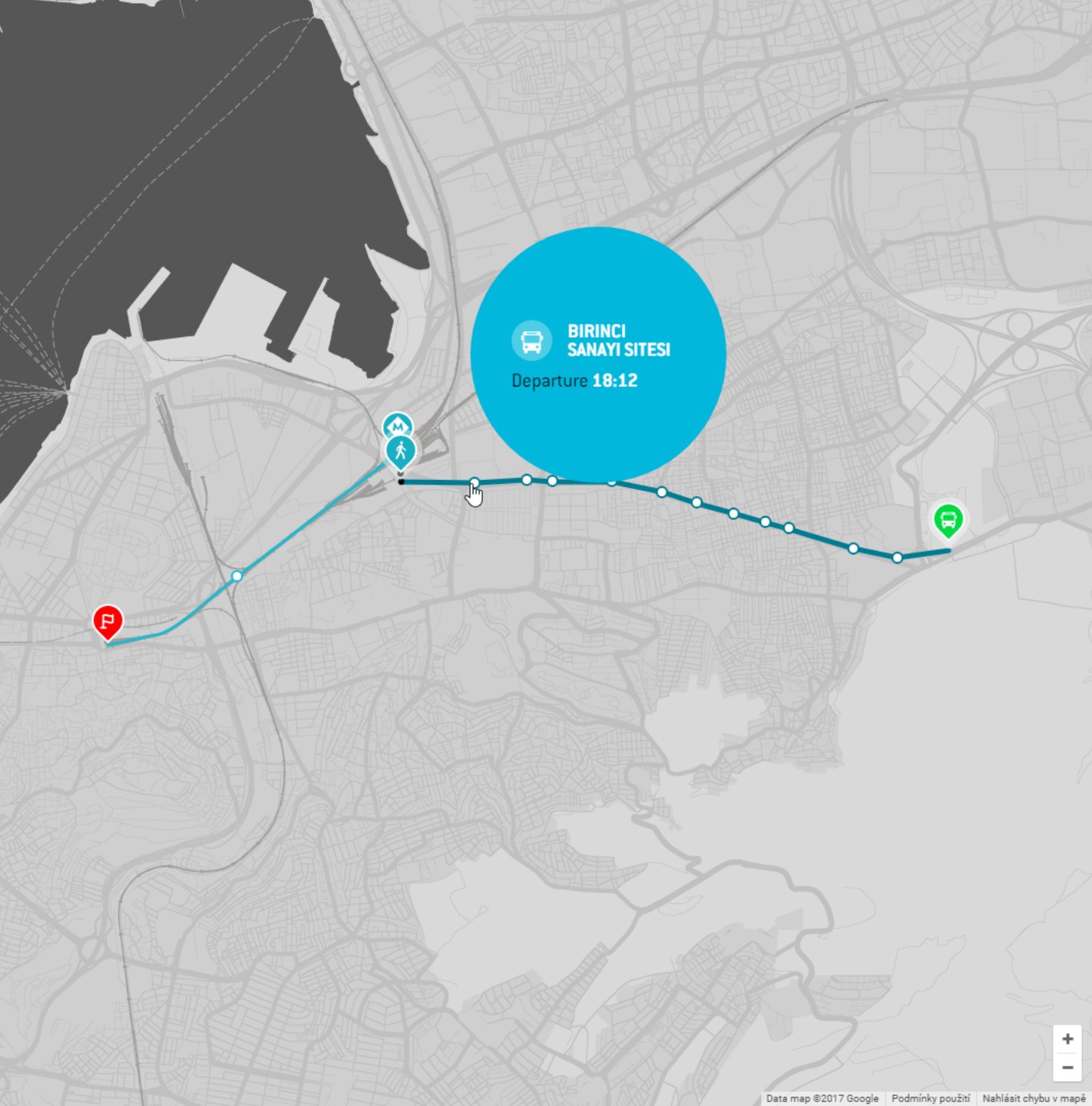
Metro 749
 18:29 Bornova (21)

PREVIOUS NEXT

Otogar > Halkapınar Metro (564 3... CLOSE

Travel time: 14 min. Distance: n/a

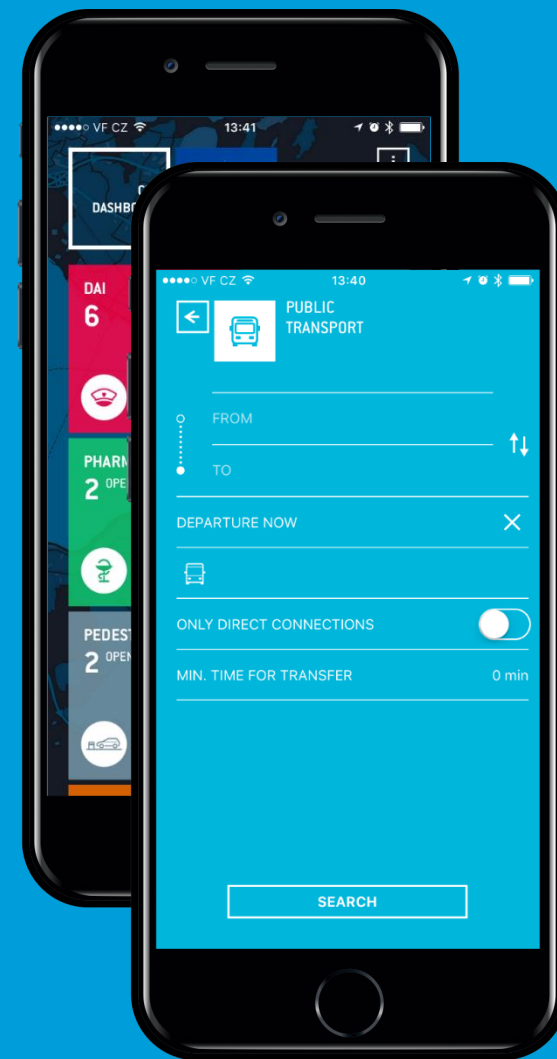
Yıldız	6995	17:56
İşikent Mezarlık	3282	17:57
İşikent Benzinlik	3280	17:58
Koyuncu	3745	17:59
Otogar	4760	18:01
Bulvar	1154	18:02
Depo	1883	18:03
Park	4992	18:04
Kahveler	3329	18:05
Umut	6198	18:06
Çamdibi Esnaf Odası	1336	18:07
Kartal	3502	18:08
Gürbüz	2928	18:09
Atatürk Stadi	553	18:11
Birinci Sanayi Sitesi	1011	18:12
Halkapınar Metro	3039	18:15



BİRİNCİ SANAYİ SİTESİ
 Departure 18:12

VEREJNÁ DOPRAVA

- Integrácia do jedného systému
- Jedno miesto na vyhľadávanie pre občanov
- Sčítače cestujúcich v autobusoch optimalizujú dopravu
- Prioritný systém skracuje čas jazdy a znižuje čakanie na zastávkach



MISIA 6

**MONITOROVAŤ A VYLEPŠIŤ
PARKOVACIU SITUÁCIU V MESTE**



Barınova / Otapark
154
5
ortana

P
TAKSI

HALKBANK HALKBANK

SUM
20

PARKOVANIE NA ULICI

U534 0534
225 225
98 14 98 14

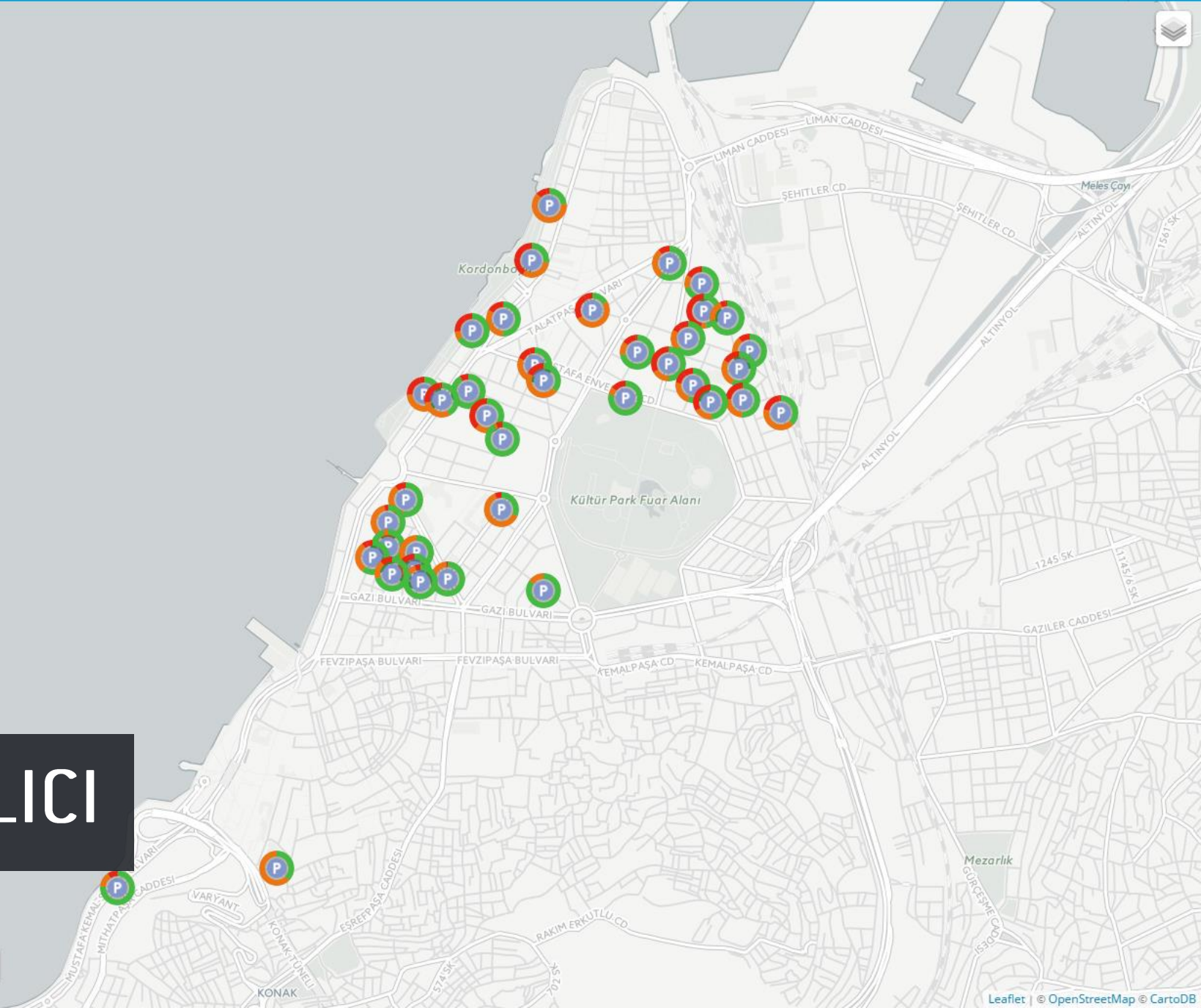
Search

- ▶ Atatürk Voleybol Salonu Yol Kenarı Otoparklar (8)
- ▶ Hilton Otel Yol Kenarı Otoparklar (11)
- ▶ Konak Otoparklar (2)
- ▶ Kordon Yol Kenarı Otoparklar (4)
- ▶ Mimar Sinan Hastaneler Yol Kenarı Otoparklar (6)
- ▶ Namik Kemal Anadolu Lisesi Yol Kenarı Otoparklar (2)
- ▶ Plevne, Vakko, Mustafa Enver Bey Yol Kenarı Otoparklar (3)
- ▶ Rektörlük Yol Kenarı Otoparklar (4)

+
-

PARKOVANIE NA ULICI

● Free ● Occupied ● Overstay



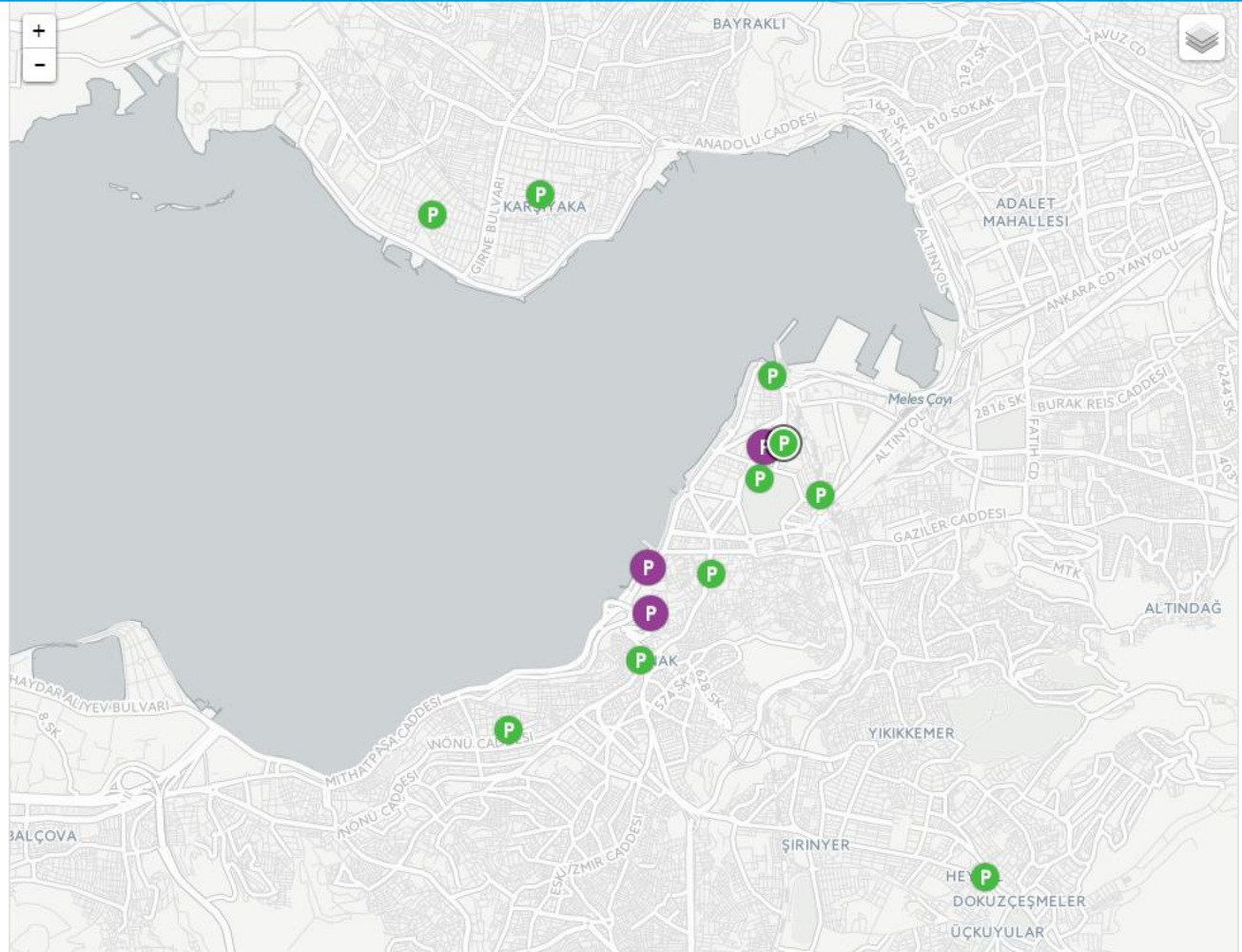


PARKOVANIE V PARKOVACÍCH DOMOCH

Status Areas

Search

- Disconnected (4)
- Error (0)
- Warn (0)
- Success (13)



Detail

Info Parameters Logbook

Name Alsancak Yeraltı Otopark CPS-TR-IZM-M2-02

Occupancy

Total 6 Occupied / 127 Free
 Disabled people 2 Occupied / 2 Free

History

Average time and price



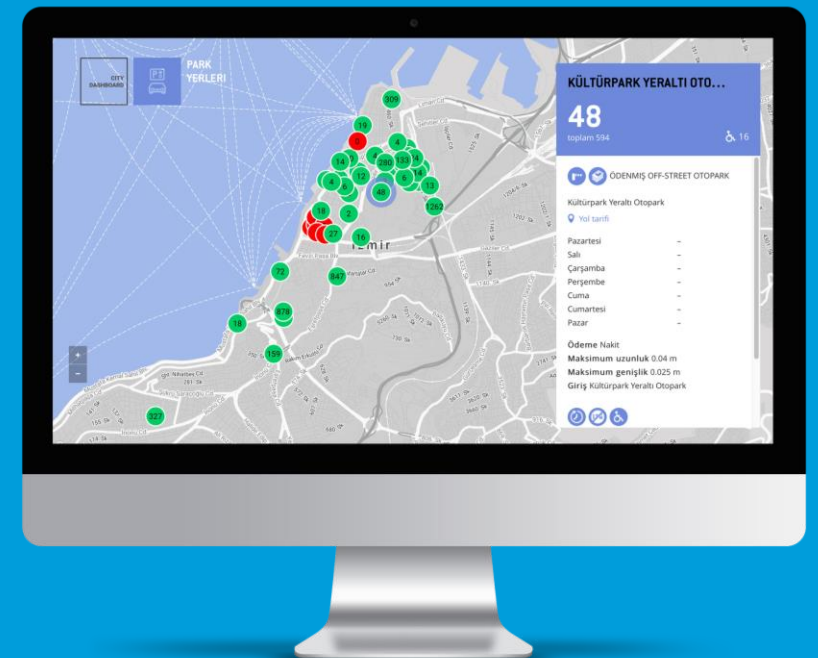
Vehicle count



PARKOVANIE V PARKOVACÍCH DOMOCH

● Success
 ● Warn
 ● Error
 ● Disconnected
 ● ● ● Out of order

- Integrácia parkovania na ulici a v parkovacích domoch do jedného systému
- Navigácie na voľné parkovacie miesta pomocou mobilnej aplikácie
- Lepšia stratégia plánovania na základe pozbieraných dát



MISIA 7

VYTVORIŤ CENTRUM RIADENIA DOPRAVY

İZMİR ULAŞIM MERKEZİ İZUM

İZMİR
BÜYÜKŞEHİR
BELEDİYESİ

İZMİR
BÜYÜKŞEHİR
BELEDİYESİ



NOVÉ KONTROLNÉ CENTRUM



Overview



Traffic Control



Traffic Level



Travel Time



Off-Street Parking



On-Street Parking



Violations



Pedestrian Zone



VMS Operator



Public Transport



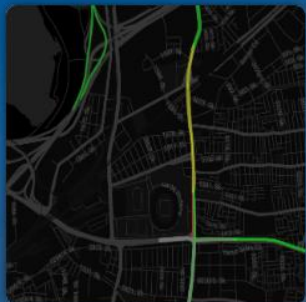
License Plate Register



Accidents and Closures



Weather Stations



Video Wall Traffic

OPERÁTORSKÝ DASHBOARD

- Kontrola mesta z 1 budovy a z 1 systému
- Centrálna kontrola pre zníženie dopravných nehôd
- Scenáre pre rýchlu reakciu a riešenie problémov
- Efektívne využitie zdrojov

MISIE SPLNENÉ



İZMIR
TURECKO



LEGNICA
POLSKO



ZLÍN
ČESKO

SIBIU
RUMUNSKO



MARTIN NOSKOVIČ

0911 694 008

noskovic.martin@alam.sk

ALAM S.R.O.