

The Role of AI in HealthCare Transformation

Jutas Földvári

General Manager, GE HealthCare CEE



GE HealthCare



A leading global medtech and diagnostics innovator

Key numbers

\$18.3B Revenue in 2021

50K Employees worldwide
over 1,500 in EE

160+ Countries
20 countries in EE

4M+ Installed Base
27,000+ devices in EE

1B+ Patients served annually

Notes: Figures as of 2021 unless otherwise noted

¹ Source: As of October 2022: <https://www.fda.gov/medical-devices/software-medical-device-samd/artificial-intelligence-and-machine-learning-aiml-enabled-medical-devices>

Differentiators

100+ year legacy of innovation

- ~\$1B+ in annual R&D & product investment spend
 - 11K+ patents granted globally
 - **Growing, focused R&D driving innovation releases every 12-18 months for most product lines**
-

Largest global Installed Base (IB)

- **4M+ Installed Base and 2B+ procedures per year**
 - ~3 patient procedures using imaging agents per second
 - ~50K employees with customers in 160+ countries
 - Anesthesia is administered by a GE HealthCare machine approximately every 0.2 seconds
-

Ability to integrate data for insights

- 200+ software applications
- **Top of recent FDA list of AI-enabled device authorizations in the U.S., with 42 authorizations¹**

The need to reimagine healthcare

10 million

shortfall (13%) in global healthcare workers by 2030 (WHO)

1-in 6

be 60+ years old by 2030 - an increase of 400 million from 2020. (WHO)

Clinicians

42%

are actively considering leaving the healthcare industry

44%

don't feel fully appreciated by patients and patients families

39%

don't feel a sense of pride in their profession

Patients

44%

Lack confidence they can access care in a timely manner

42%

have little trust in their healthcare system providing affordable care

37%

have little confidence they will be treated when needed



Summary of key findings: consensus and validation

Alignment

Patients and clinicians share a vision for the future.

Agreement

The study reveals that the people most impacted agree with the trends driving the industry forward.

Development

While barriers stand in the way of a more human and flexible healthcare system, these patient and clinician perspectives offer insights to help us collectively overcome them.

The infographic features a large white number '1' on a purple background. Above the number is a small icon of a mountain with a flag. Below the number, the text 'common goal' is written in white. Underneath, a paragraph describes the goal: 'A healthcare experience that is more human and flexible, focusing on the needs of both clinicians and patients.'

The infographic features a large white number '6' on a green background. Above the number is a small icon of a bar chart with an upward arrow. Below the number, the text '6 trends' is written in white. Underneath, a list of six trends is provided, each separated by a horizontal line: 'Care team well-being', 'Patient and care team partnership', 'Smart and connected technology', 'Harnessing big data', 'Distributed care', and 'Predictive, preventative and precision medicine'.

The infographic features a large white number '9' on an orange background. Above the number is a small icon of a hexagon with a horizontal line through it. Below the number, the text '9 barriers' is written in white. Underneath, a list of nine barriers is provided, each separated by a horizontal line: 'Poor job satisfaction', 'Clinicians do not operate at the top of their licenses', 'Clinicians want more communication, collaboration and technology skills', 'Technology is not easy and intuitive to use', 'Lack of access to data at the right time', 'Low trust in Artificial Intelligence data for medical use', 'Patient hesitation to share personal health data', 'Low patient comfort in out-of-clinic facilities and staff', and 'Low clinician trust in self-administered test results'.

Note: While these barriers are consistent across all the countries surveyed, the degree to which a country experiences a barrier may vary.

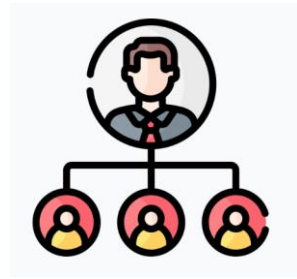
The Role of AI in HealthCare

AI can make healthcare human centric



Equipment level

- On devices AI:
- drive focus
 - highlight critical cases
 - Reduce biases



Department level

- Operational AI:
- Streamline workflows
 - Reduce admin
 - Reduce waiting lists



Enterprise level

- Network/Hospital AI:
- Pathway analytics
 - Preventive focus
 - Optimize patient experience



AI already impacting healthcare

Enhancing the power of data

- Smart devices
- Connected devices
- Multimodal longitudinal solutions

Leveraging AI tools

- Machine learning
- Deep learning
- Foundation models
- Synthetic data
- Computer vision
- Large Language Models

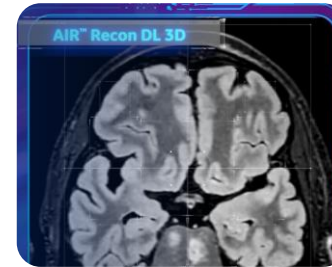
Impact on the most pressing challenges:

- Health system efficiency and access,
- Clinical outcomes
- System interoperability
- Workforce shortage and load



GE HealthCare Continuously innovating

- **AIR Recon DL**, an MRI deep-learning-based solution that can scan patients in half the time while also improving image quality
- **Critical Care Suite 2.0**, an industry-first collection of AI algorithms embedded on a mobile x-ray device for case prioritization, automated measurements, and quality control
- **Voluson 22, a Women's Health ultrasound system** that provides improved image quality and specialized clinical tools to help see more anatomical detail with greater certainty
- **iRT - Radiation therapy patient** platform enables greater interoperability, connectivity, and efficiency throughout the entirety of the radiation oncology care continuum
- **CardioVisio for AFib** integrates & analyzes data over time, helping healthcare providers to view a patient's heart history.
- **HelloAI** initiative is a comprehensive, self-paced e-learning experience on AI in healthcare addressing a key issue: Trust in AI. <https://www.helloaiprofessional.com/> - Application is open!



Reimagining Better Health Study

Together, we can
reimagine the
future of
healthcare

