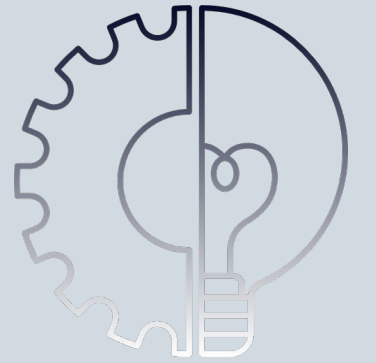
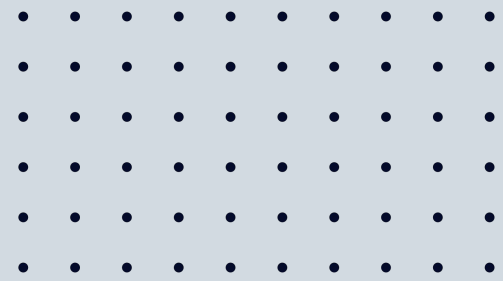


# DEEP ART MEDICINE

Súčasný vývoj a implementácia AI modelov do rádiologickej praxe na Slovensku



# DEEP ART MEDICINE, S. R. O.



## BACKGROUND



**ING. TOMÁŠ KOS.**  
CEO, CO- FOUNDER  
RIADITEĽ SPOLOČNOSTI



**MSC. DENIS KUT.**  
CO- FOUNDER  
CTO FIRMY,UMCU UTRECHT,  
RIGSHOSPITALET



**MSC. JASON. V.S**  
CO- FOUNDER, SCIENTIFIC  
BOARD, UMCU UTRECHT



**ING. MATÚŠ K. , MBA**  
CFO, FINANČNÝ RIADITEĽ

## 4. miesto na konferencii

Odborníci na AI v  
oblasti medical  
imaging



Vývoj modelov pre  
oblasť rádiologie a  
rádioterapie



**Region  
Hovedstaden**

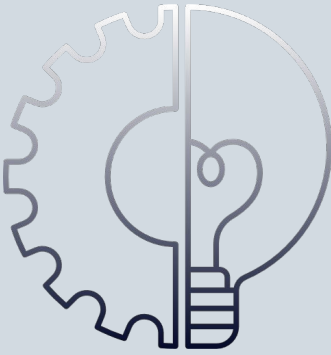


**UMC Utrecht**

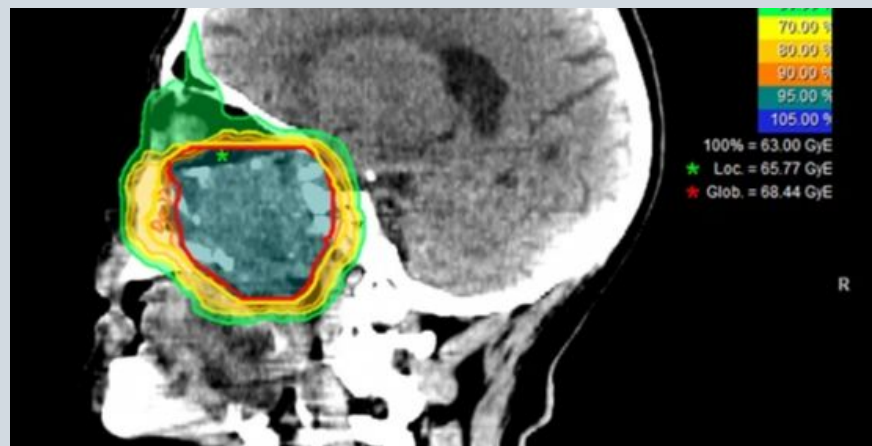


**Utrecht  
University**

# PROJEKTY, NA KTORÝCH AKTUÁLNE PRACUJEME



## The Head And Neck Squamous Cell Carcinoma (HNSCC)



- PTV segmentation (tumor segmentation)
- OARs segmentation

## Prostate Cancer (PCa)

DAM PROSTATE 01 :

- PTV (PROSTATE) SEGMENTATION
- TUMOR SEGMENTATION

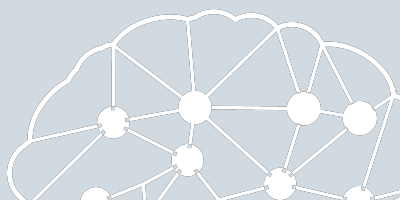
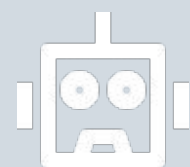
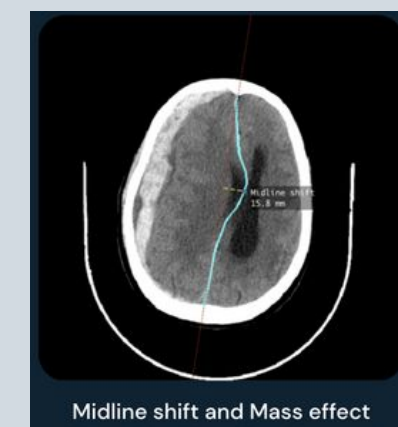
DAM PROSTATE 02 :

- GLEASON GRADE (1-5) CLASSIFICATION
- SURVIVAL RATE PREDICTION
- TUMOR RECURRENCE PREDICTION

## Head CT Scan analysis

DAM HEAD CT 01 :

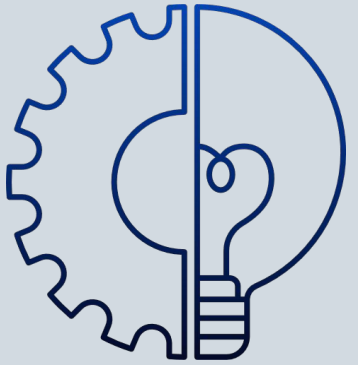
- INTRACRANIAL HEMATOMA (ICH),
- RAISED INTRACRANIAL PRESSURE (ICP),
- MIDLINE SHIFT AND MASS EFFECT (MLS)
- CRANIAL FRACTURES
- INFARCTS





# AKÉ SÚ SÚČASNÉ MOŽNOSTI PRE SLOVENSKÉ

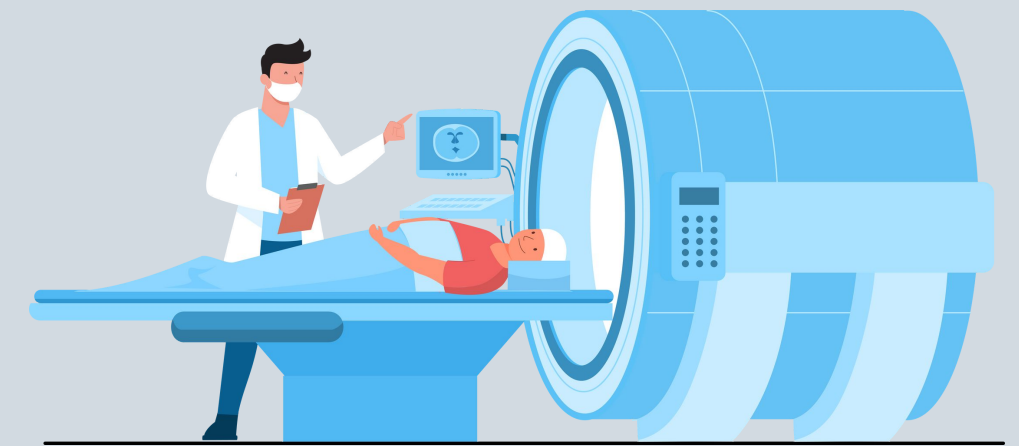
## NEMOCNICE



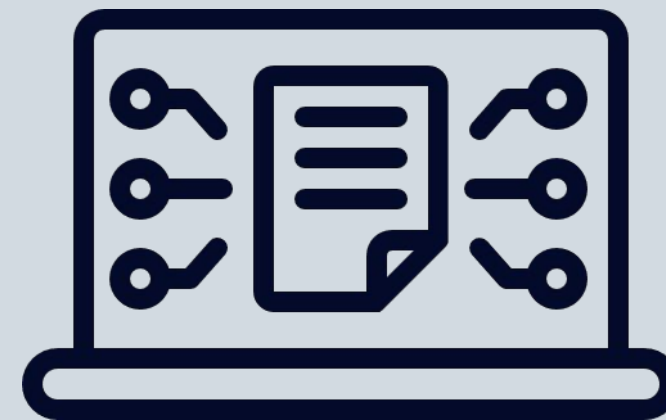
**Foreign developers**



DIFFERENT EQUIPMENT



**Slovak hospitals**



DIFFERENT PROTOCOLS





# AKO SA MÔŽU NEMOCNICE ZAPOJIŤ DO VÝVOJA MODELOV ?

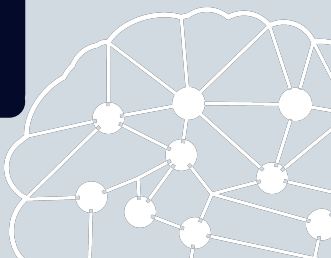
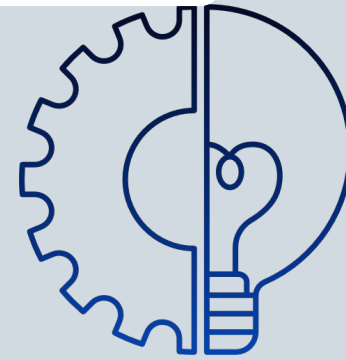
Data SET 1

Data SET 2

Online dataset  
PICCAI

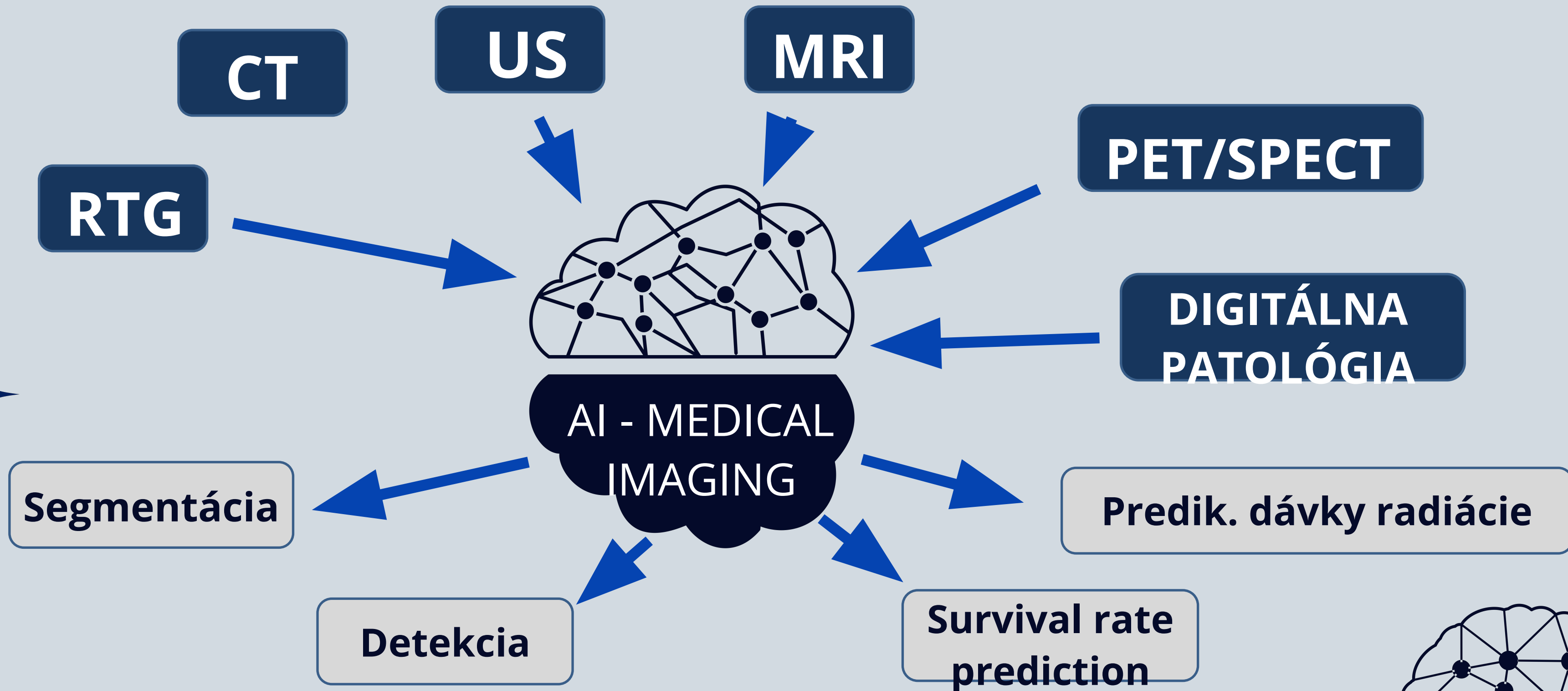
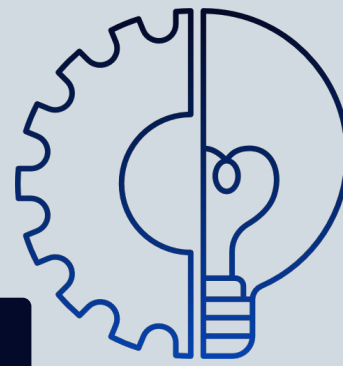
DATA SET 3

AI

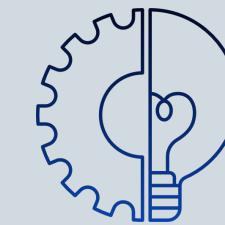


# MOTIVÁCIA

Slovensko môže byť už dnes krajinou inovácií







# ĎAKUJEME

**Deep art medicine, s. r. o.**

Tešíme sa na spoluprácu

[WWW.DEEPARTMEDICINE.COM](http://WWW.DEEPARTMEDICINE.COM)

